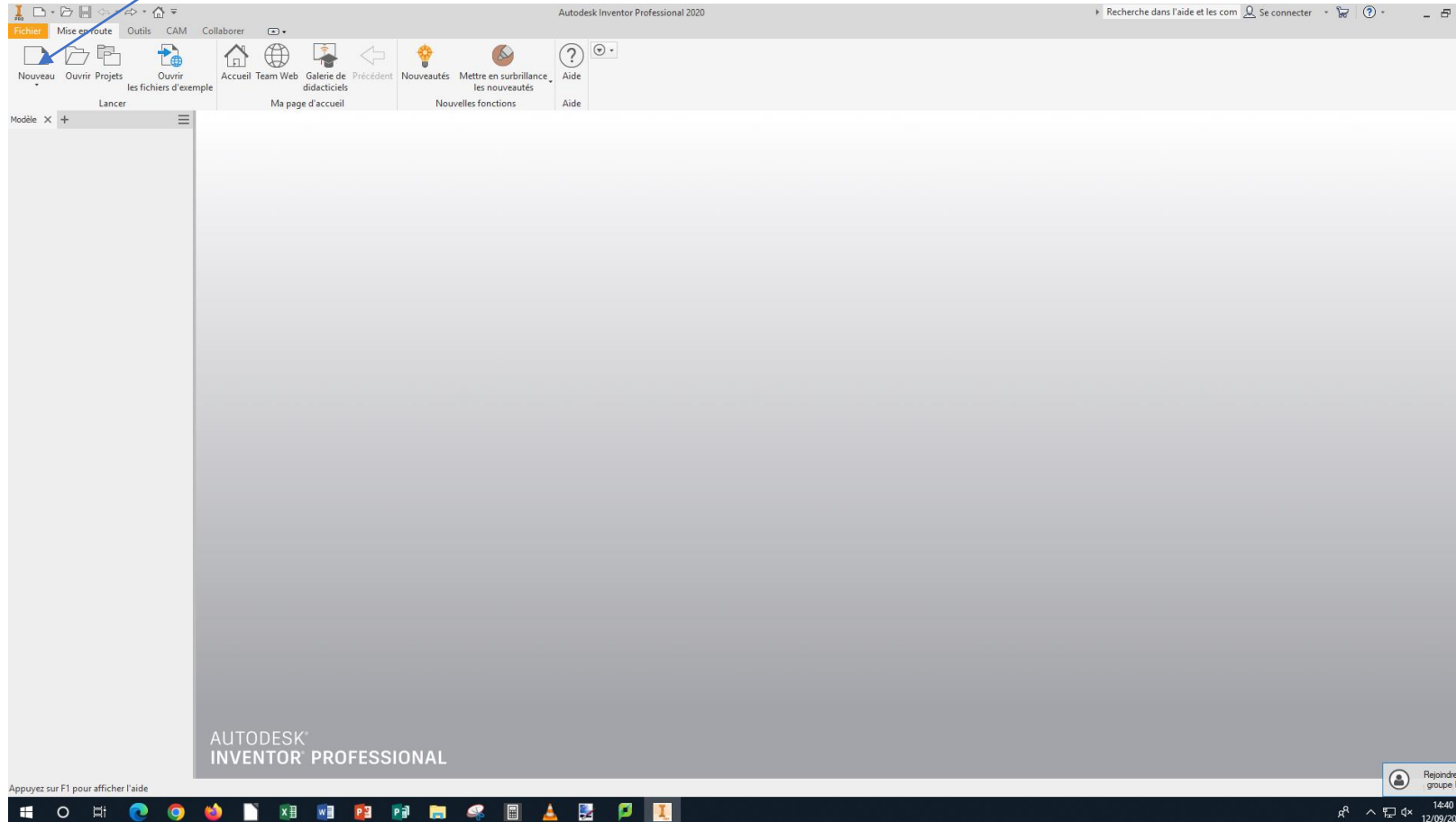


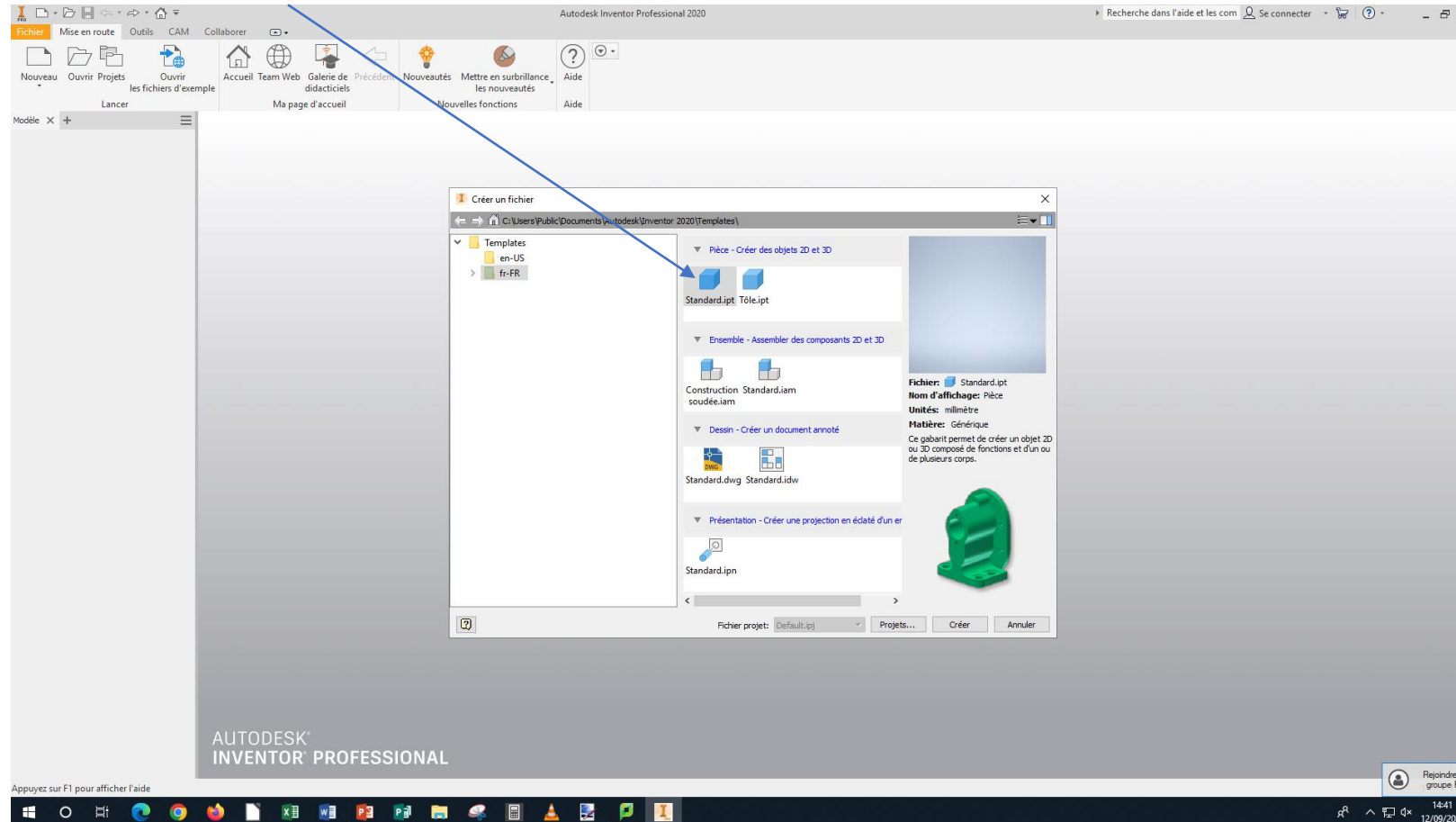
# Tutorial creation



launch the software to  
press the new tab to  
create a new part

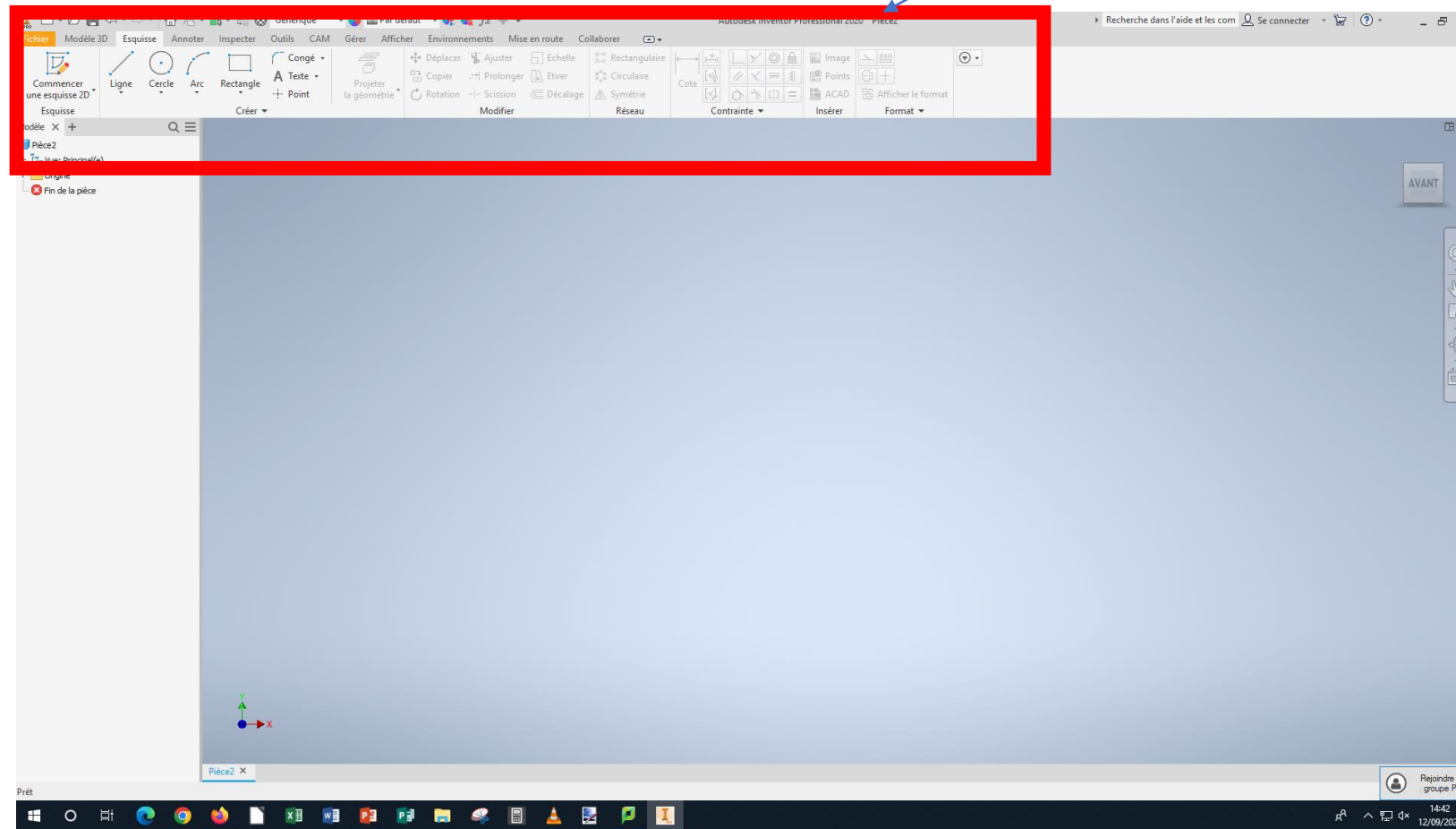


Click on standard to  
create a part



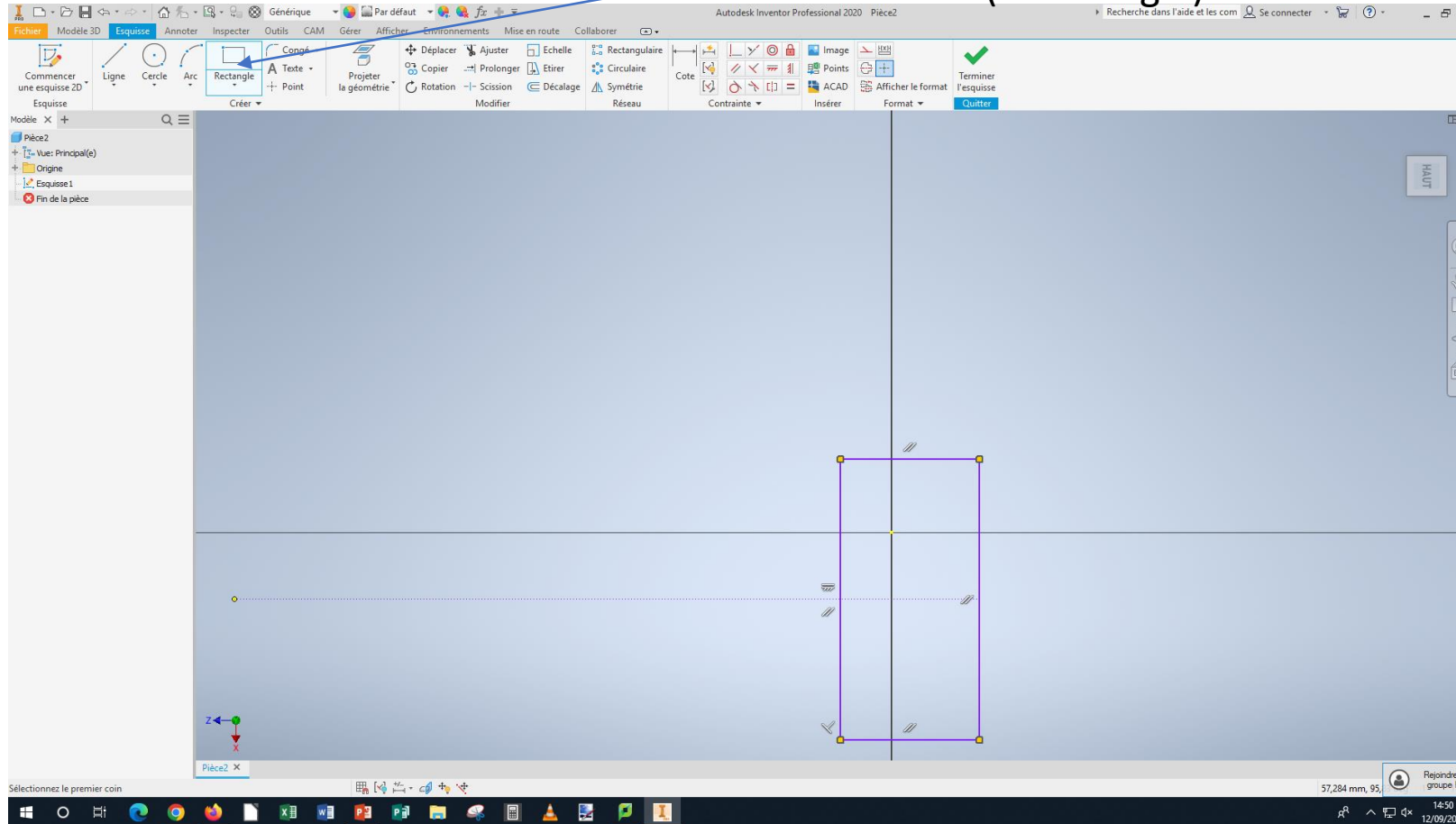
Now you are on the  
Inventor creation page

At the top of the page  
we see all the tools to  
create a 2D part



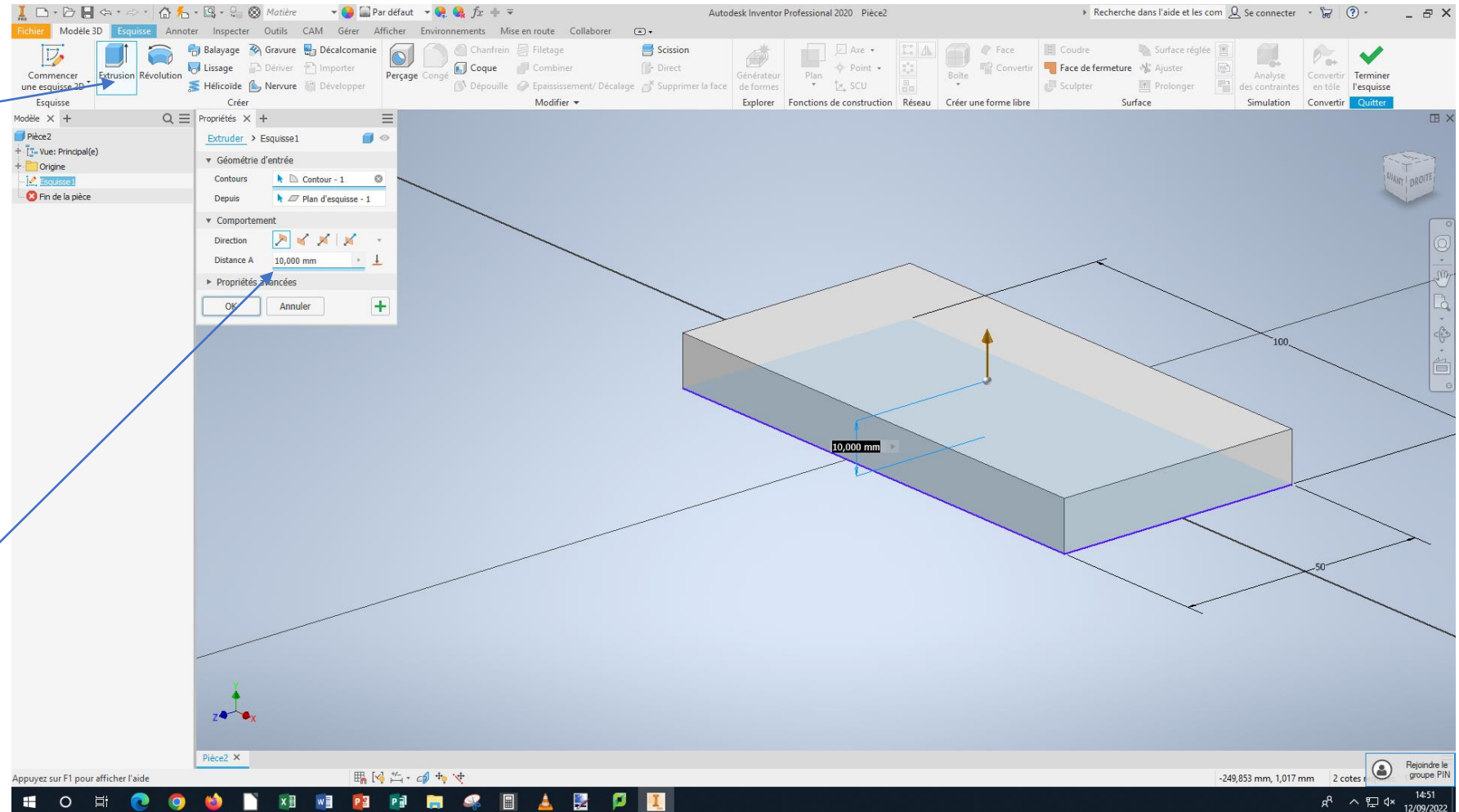
# We start to create the room

Click on the rectangle nail to create the bass of the phone (a rectangle)



# Volume de la pièce

Go to 3D model then  
extrusion After you can select  
the rectangle do the previous

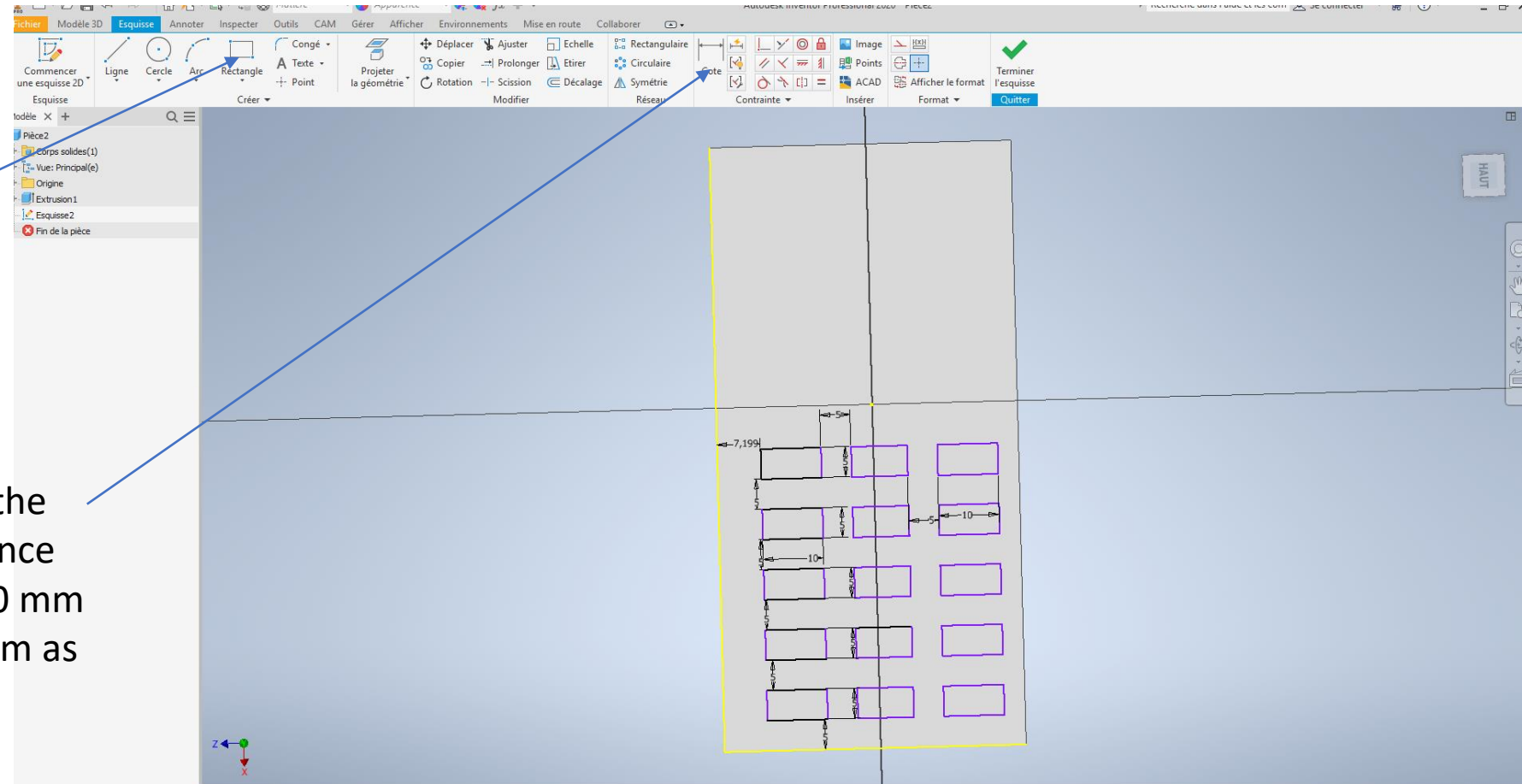


A properties tab opens in  
which one my 10 as thickness  
of the material

# Création du clavier

Once the base is done use the rectangle tool to create the keyboard keys

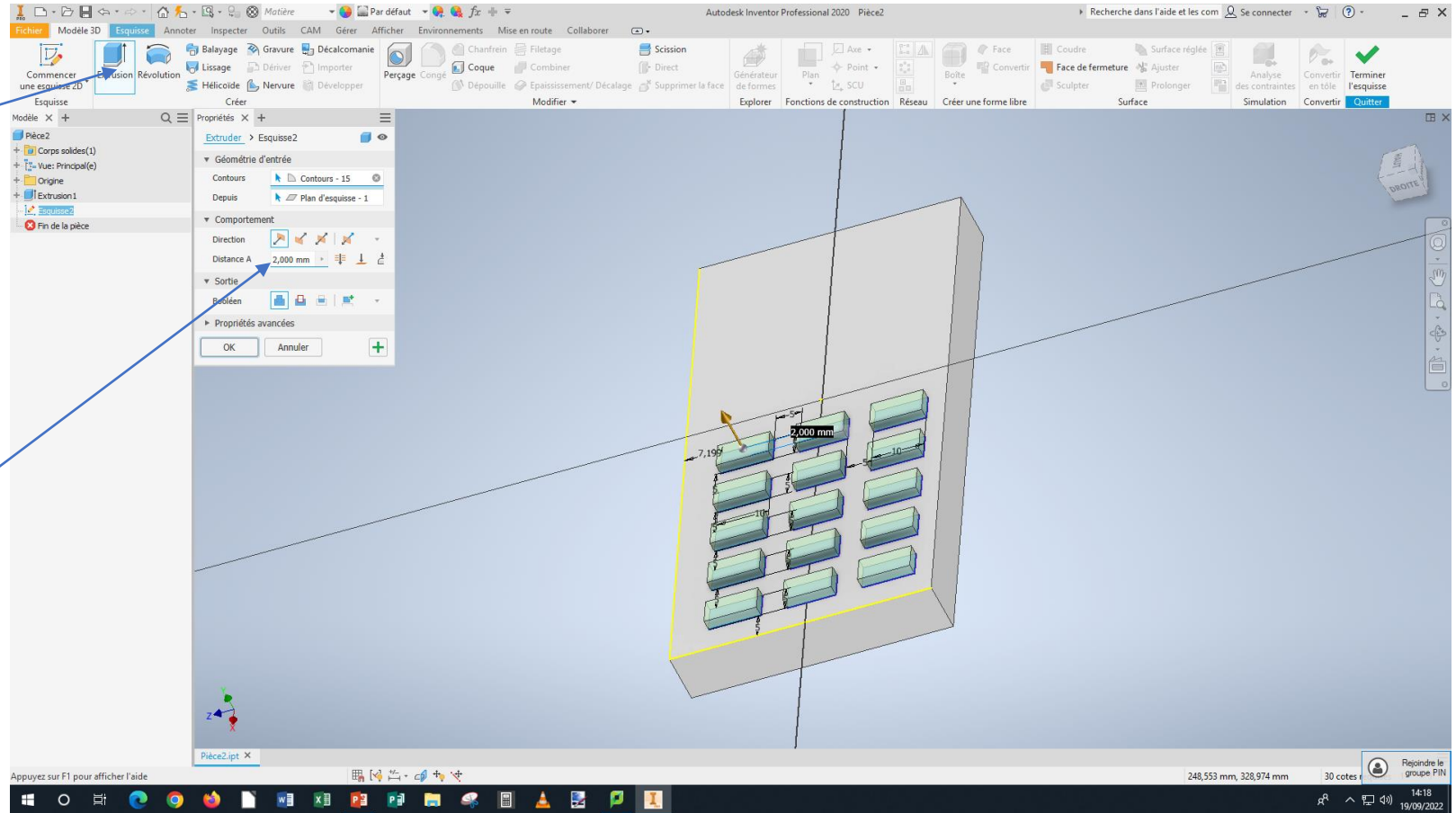
Use the dimension tool to measure the size of the rectangles and their distance the keys are 5mm on the side and 10 mm long all the keys have a space of 5 mm as in the image below



# Volume du clavier

Go to extrusion then select the rectangles you have previously built

Meter a 2 mm thicker

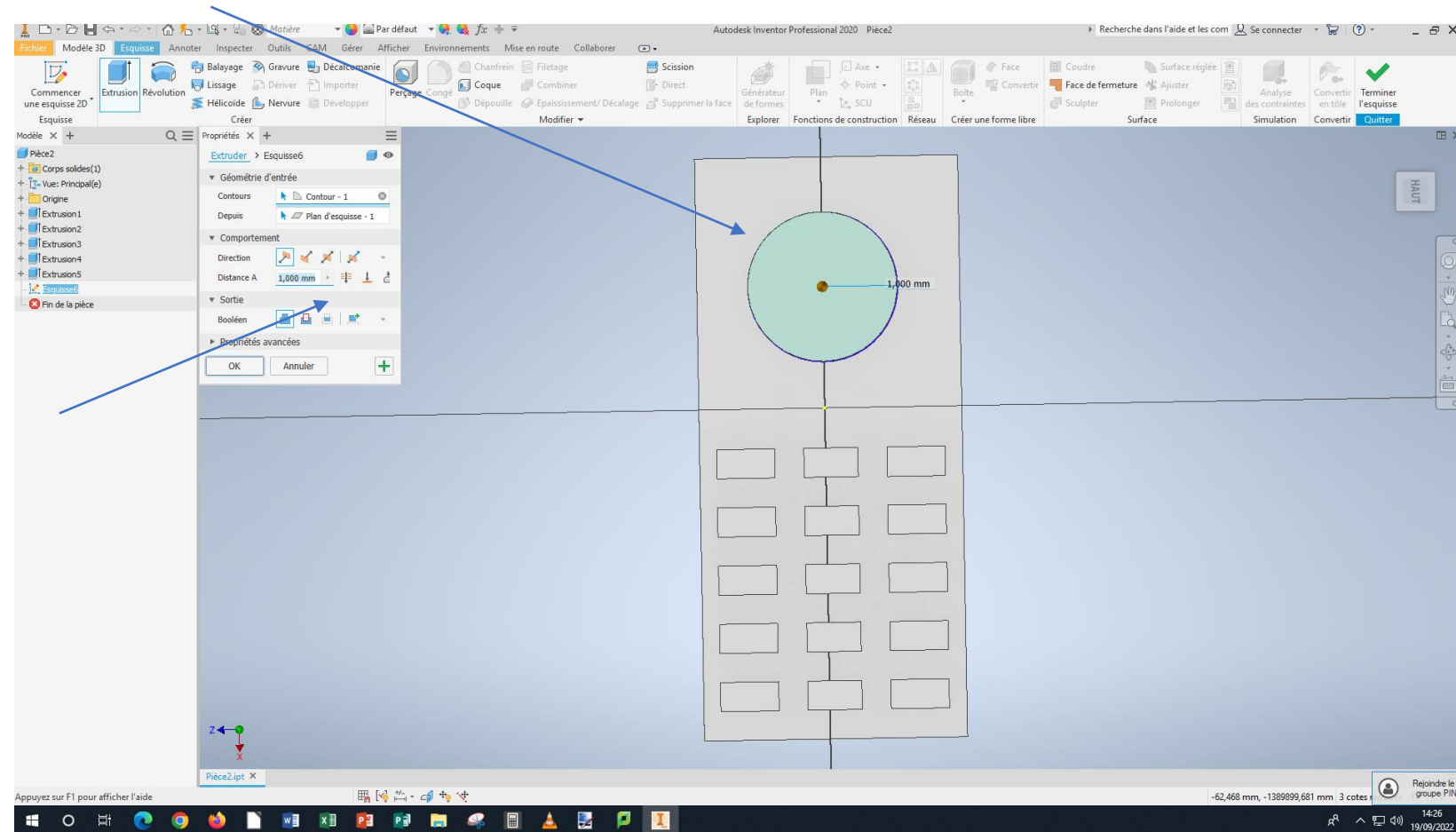




# Création de la cerure

Put a circle in the middle of the empty space

Extrude circle 1mm

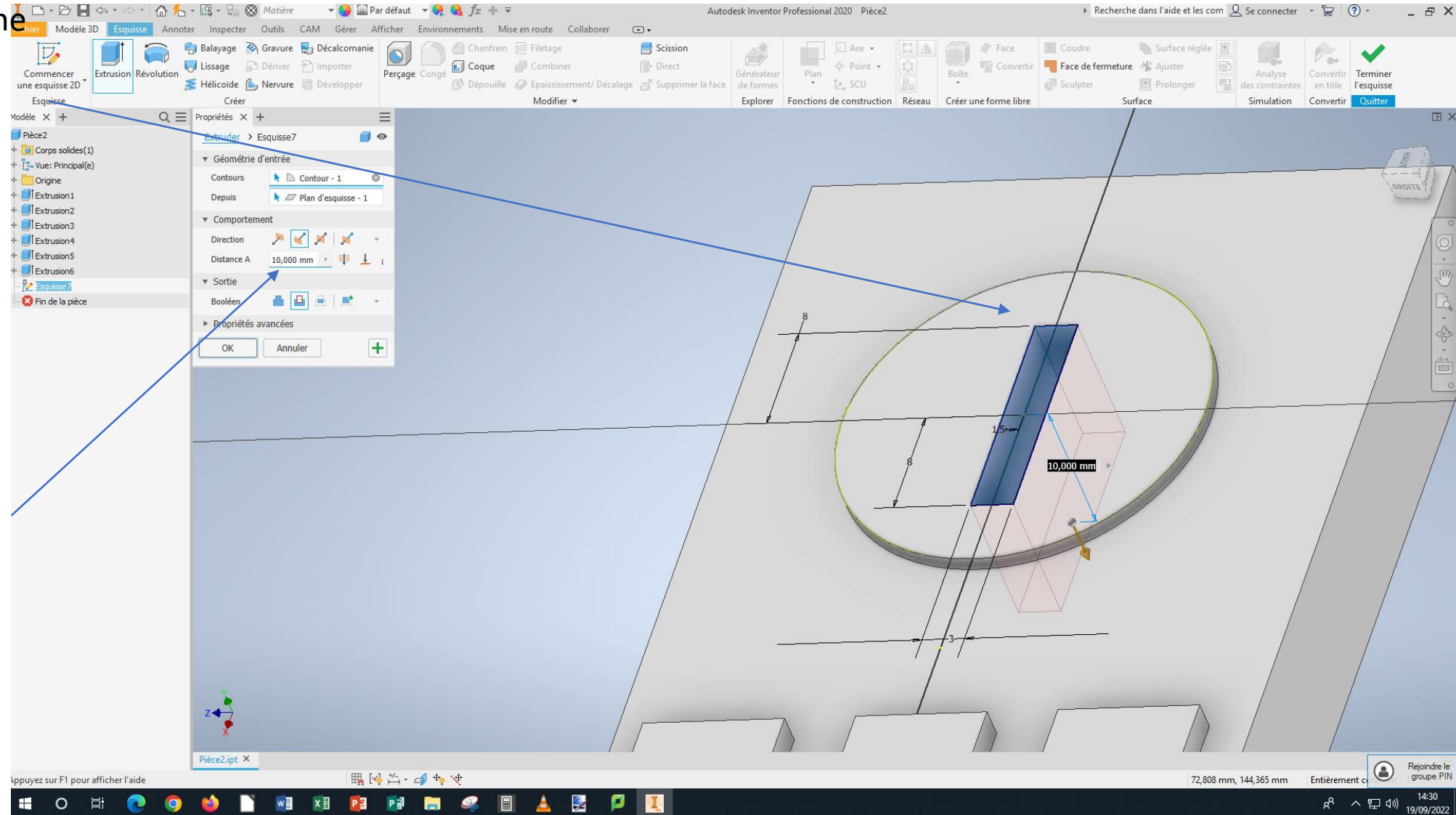


# Création de la cerure

Makes a rectangle in the center of the previous circle made

Dimensions are 3mm wide and 16mm high

Extrude the rectangle by 10mm

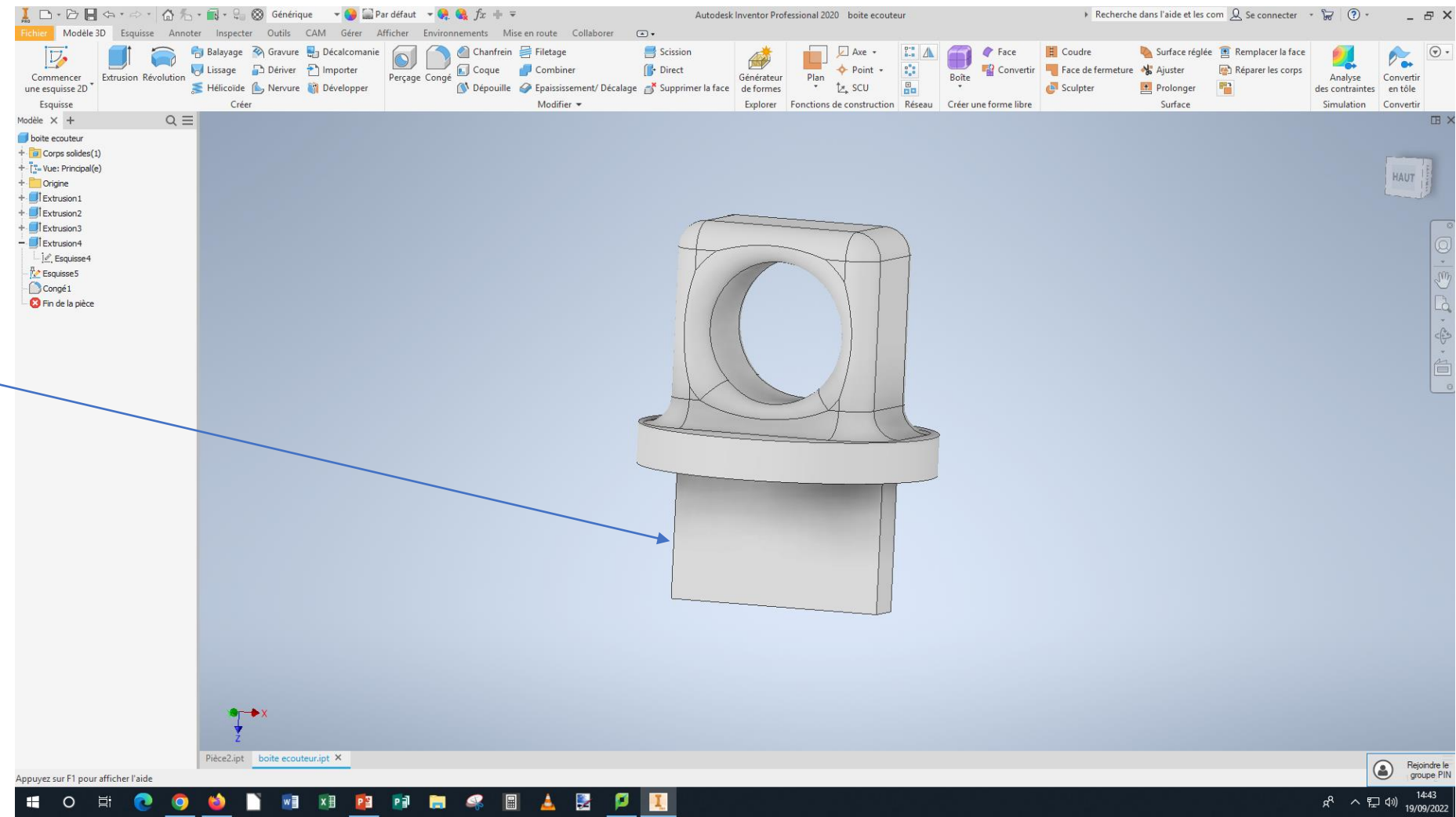


# Création de la cle

Create a new room

Les dimension du bas de la clé doit faire

- 3 mm d'épaisseur
- 16 mm de longueur
- 10 mm de hauteur



tc  
R

Restarting a sketch is selecting the dimension line

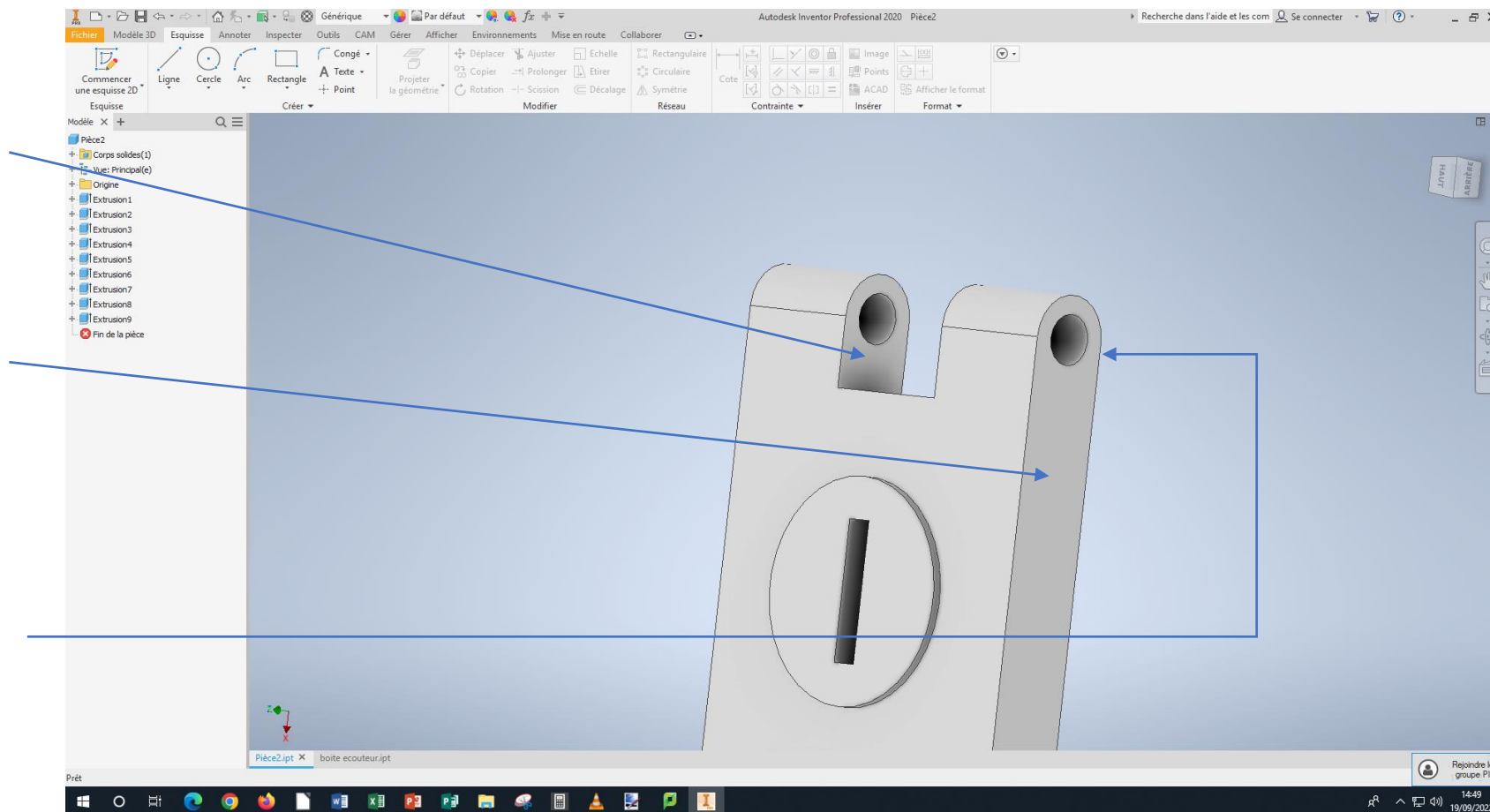
# Création fictation

pour commencer fait un trou de sorte a former un trou comme on voie sur limage

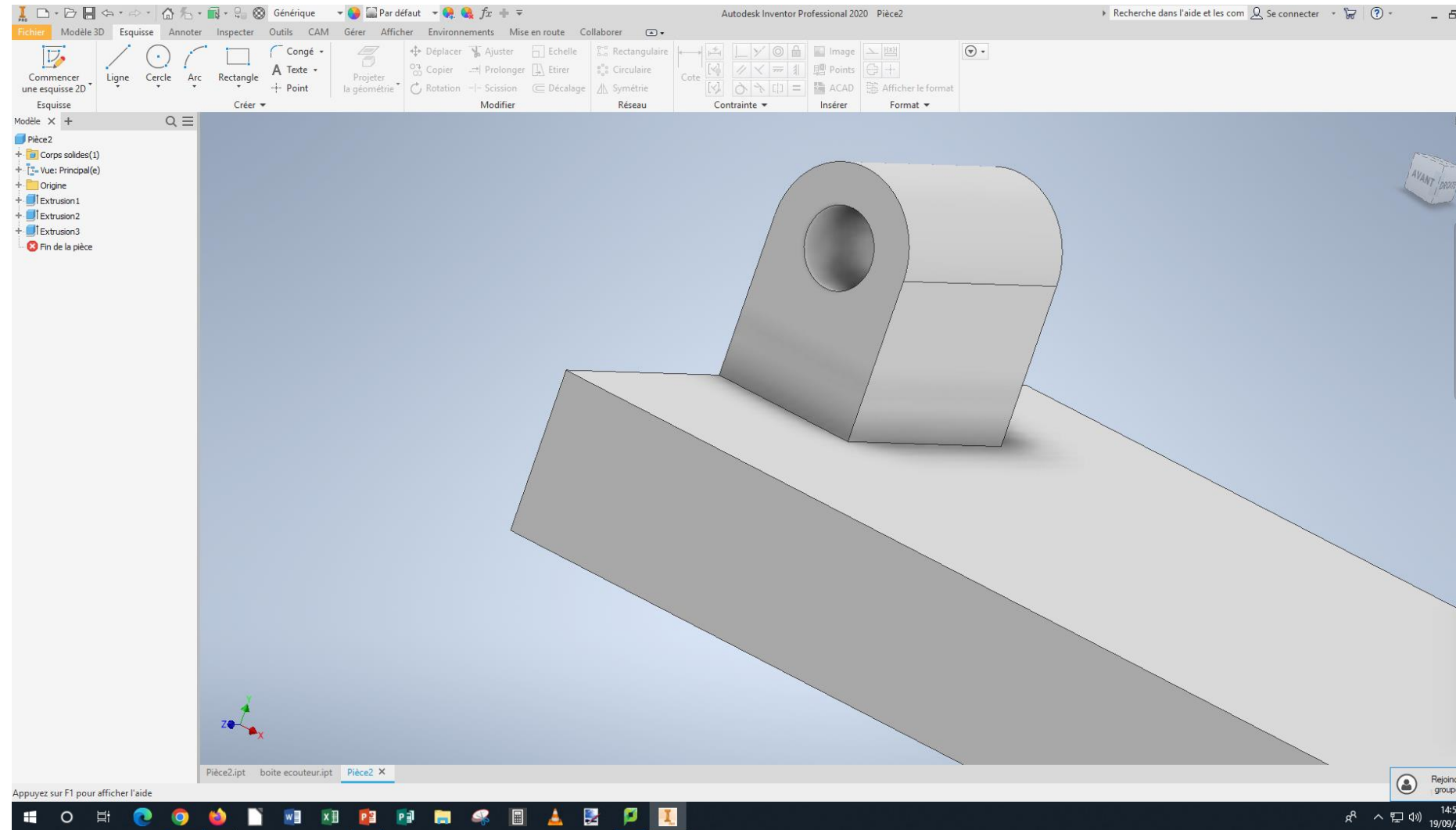
Restarting a sketch is selecting the dimension line

Makes a circle that touches 3 sides of the rectangle is a smaller one with the same center but 5 mm in diameter

To finish extrude as in the picture



# Création de l'autre fixation

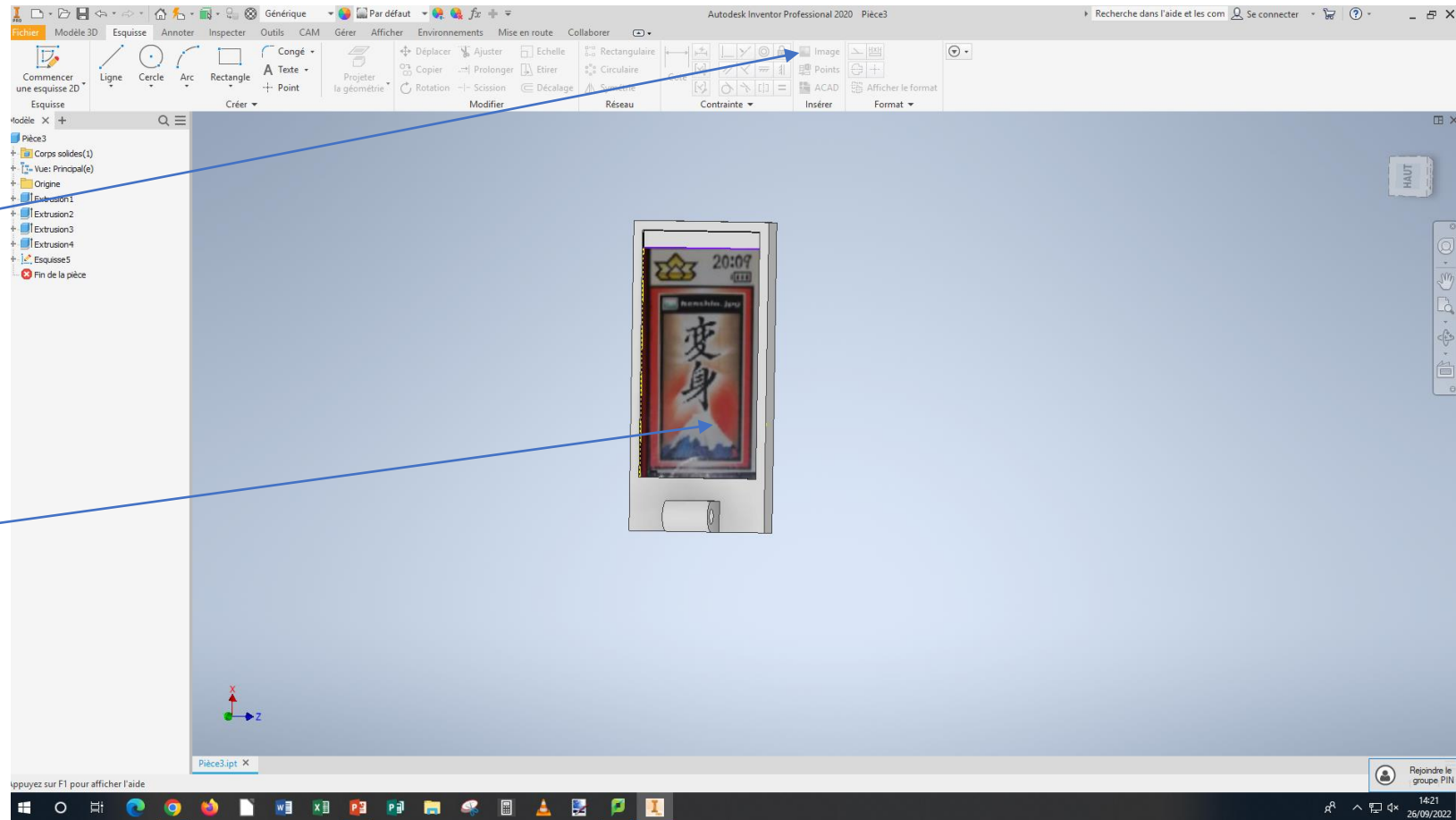


# Ecrant

Went on the internet and party a scene is recorded the dan vaux document

Click on picture

Opens the image you previously saved  
Is put the image to the size of the screen



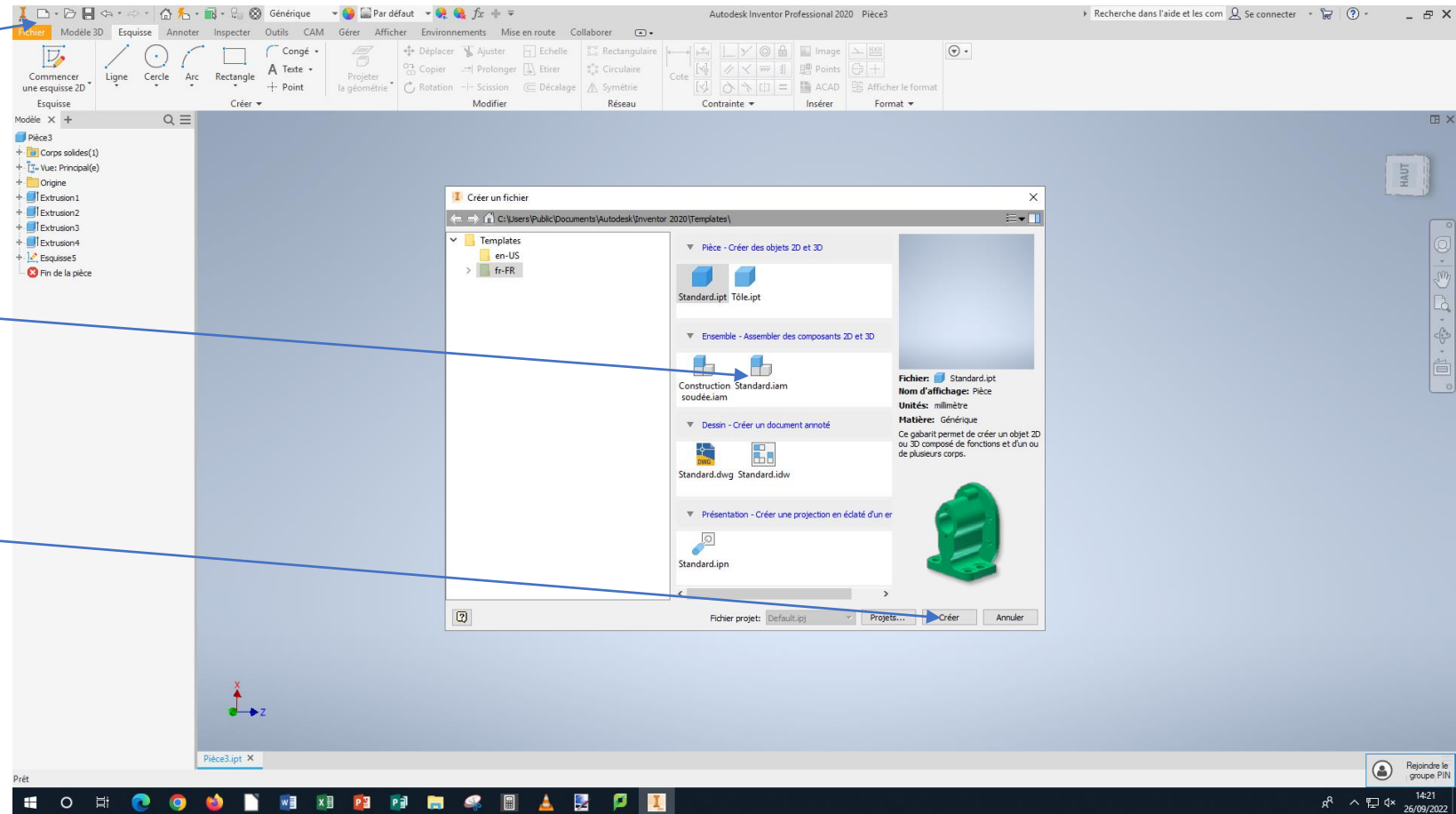


# Création de l'ensemble

go on again

Saddle primer clicks  
on standard set

To finish click on create

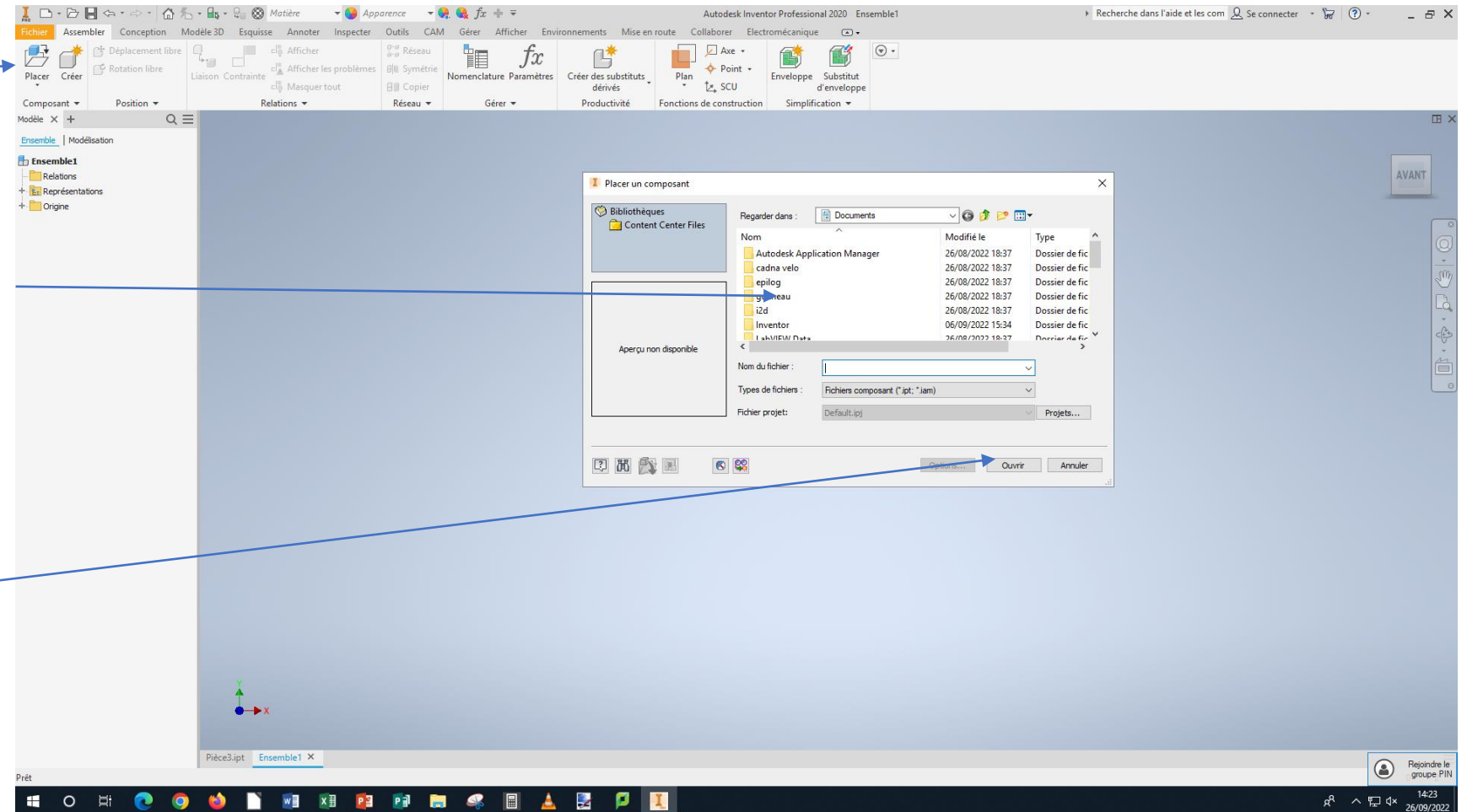


# Placer les pièce

Go on place

Open the 3 pieces you  
previously made and save

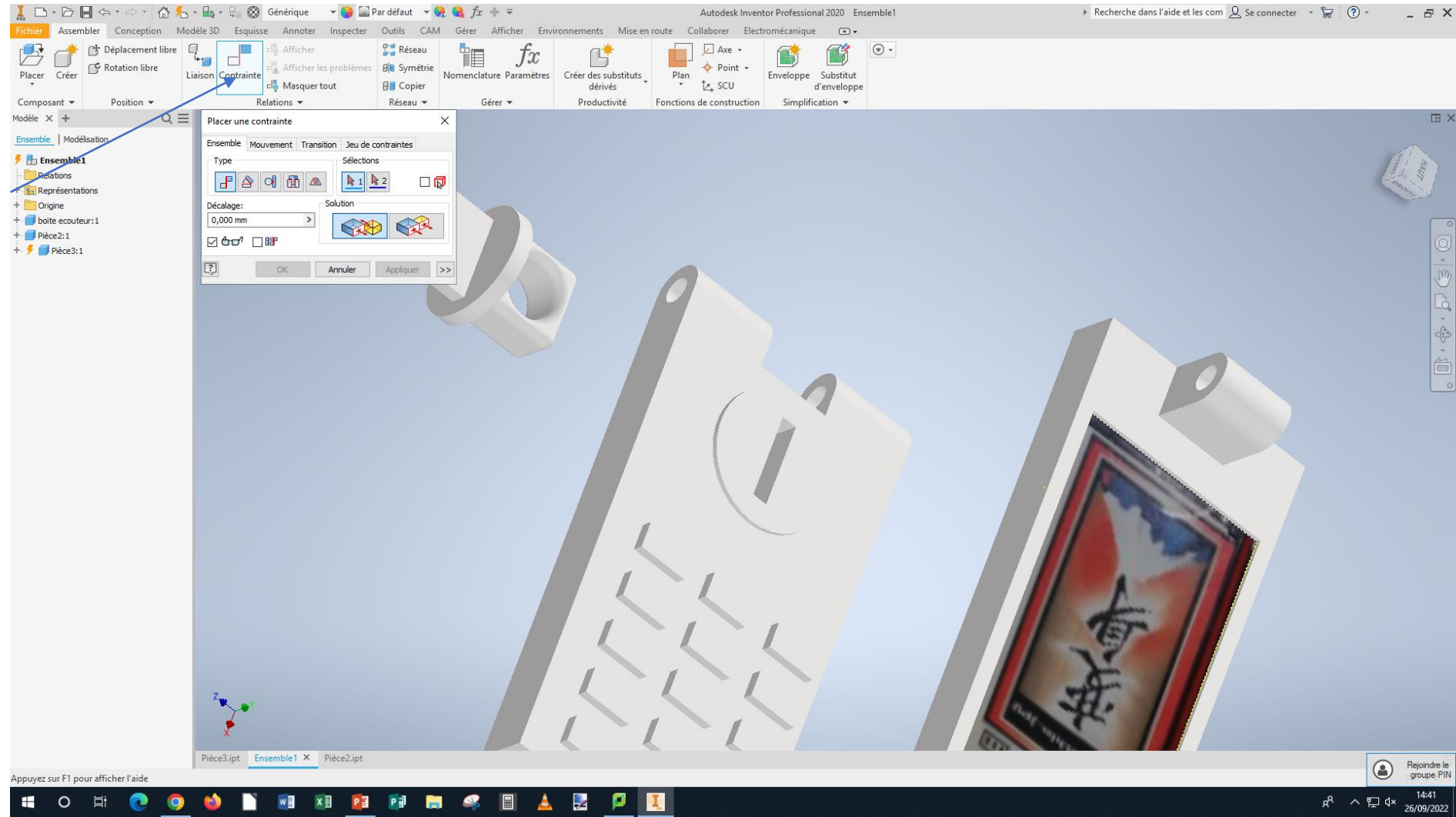
To finish click on open





# Misse en place des pièce

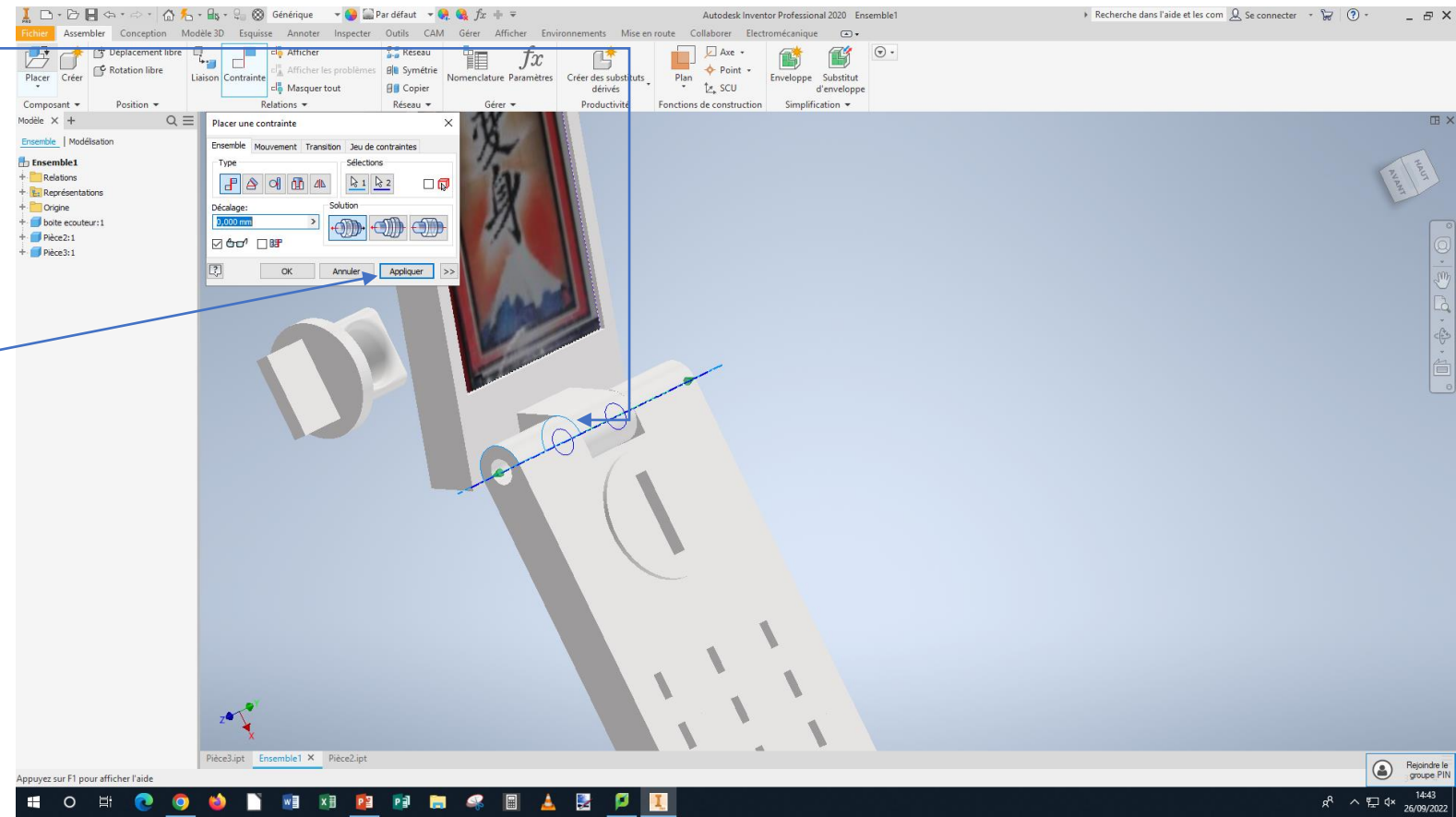
Using the constrained tool, you can place the different parts and select the correct faces



# Liaison entre l'écran et le clavier

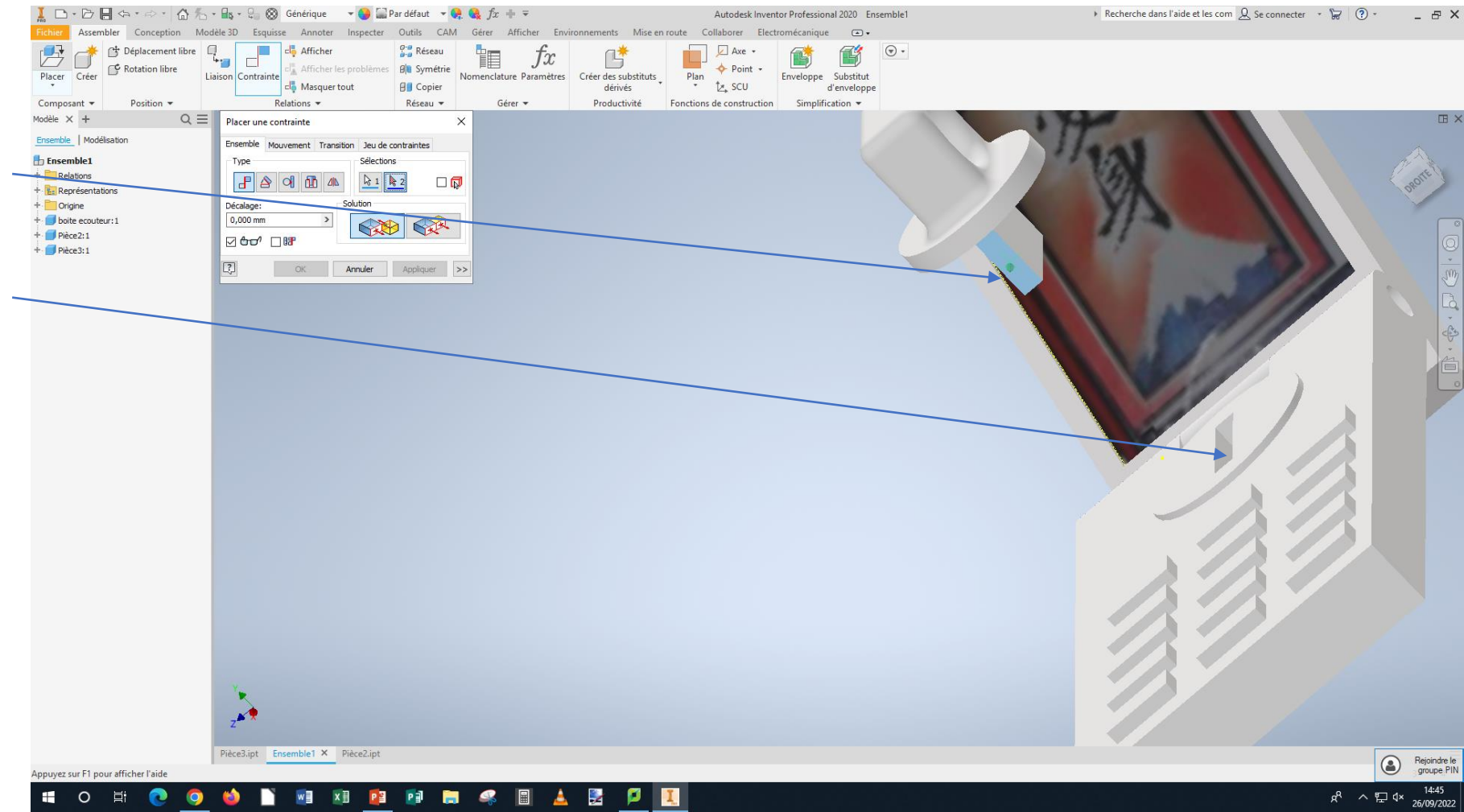
Once the tool is constrained launch  
select the notch axis of the keyboard  
Then that of the screen which will  
create a pivot connection as shown in  
the image

Tap apply



# Mis en place de la clé

Still using the  
constraint tool,  
select the faces  
that are in  
contact with each  
other



# Misse en couleur

To finish we meter in color of the parts

Go to color

Select the parts you want  
meter in color

