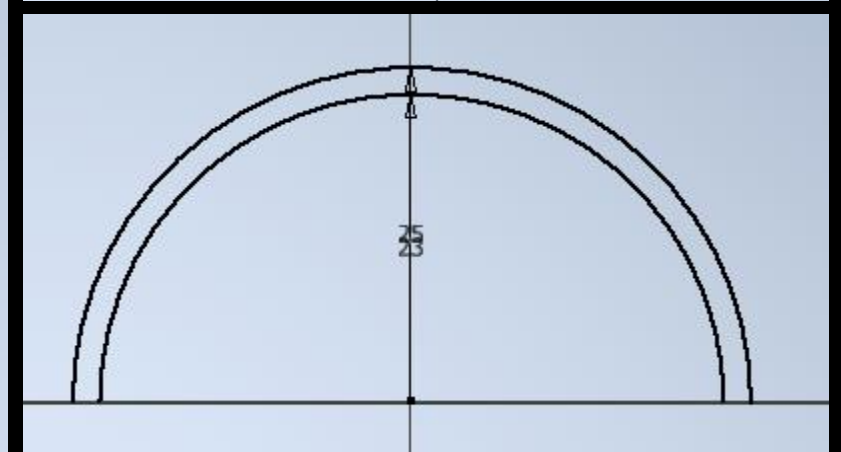
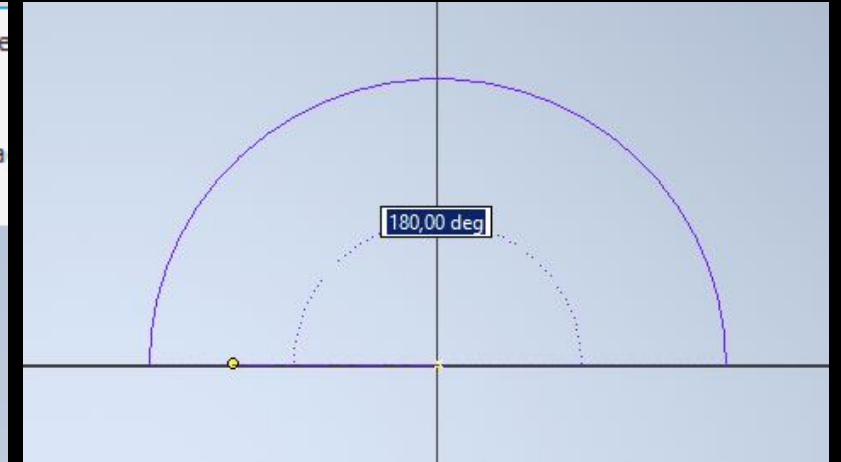
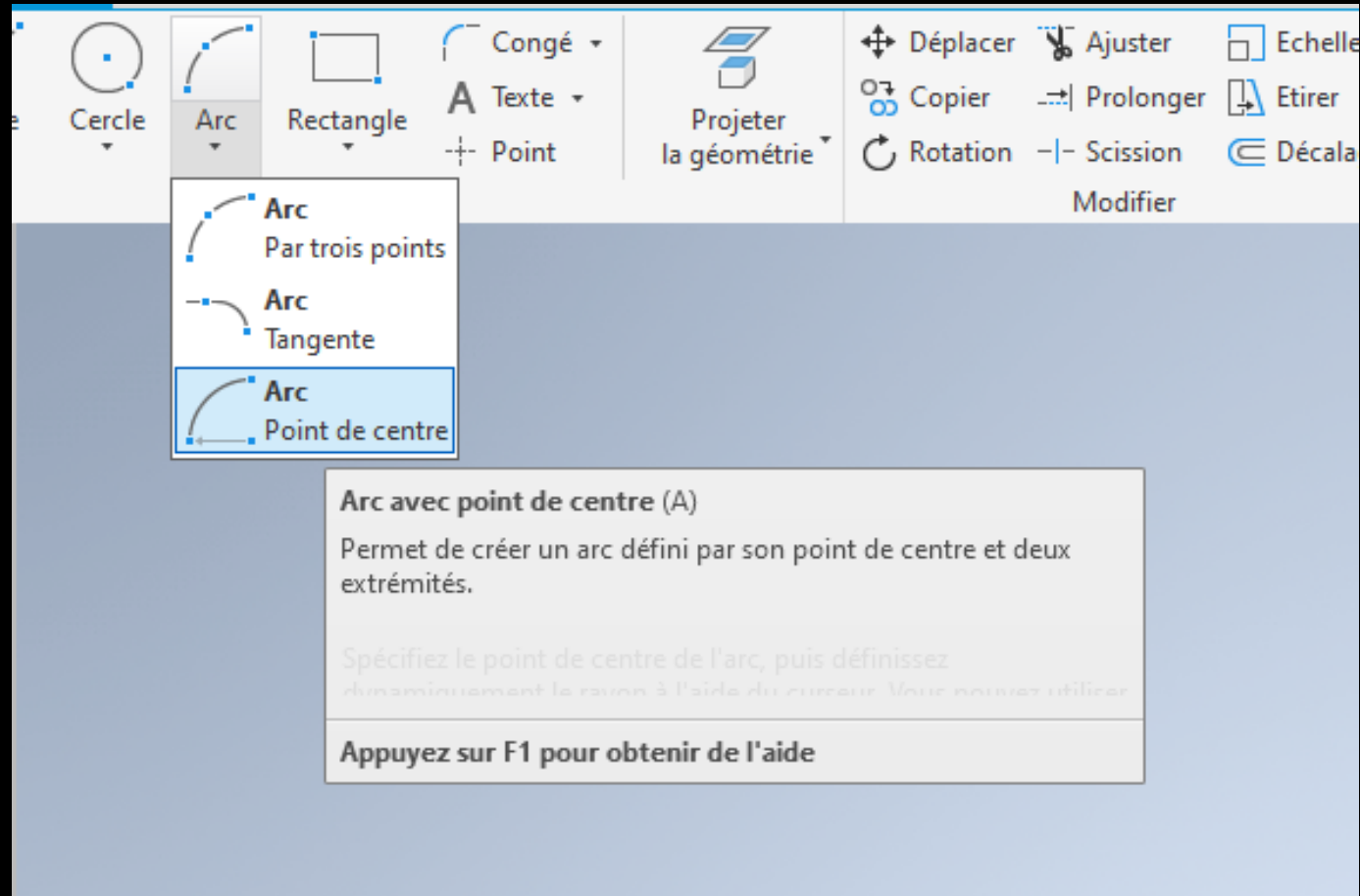
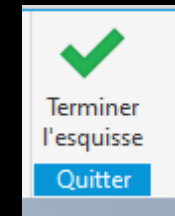
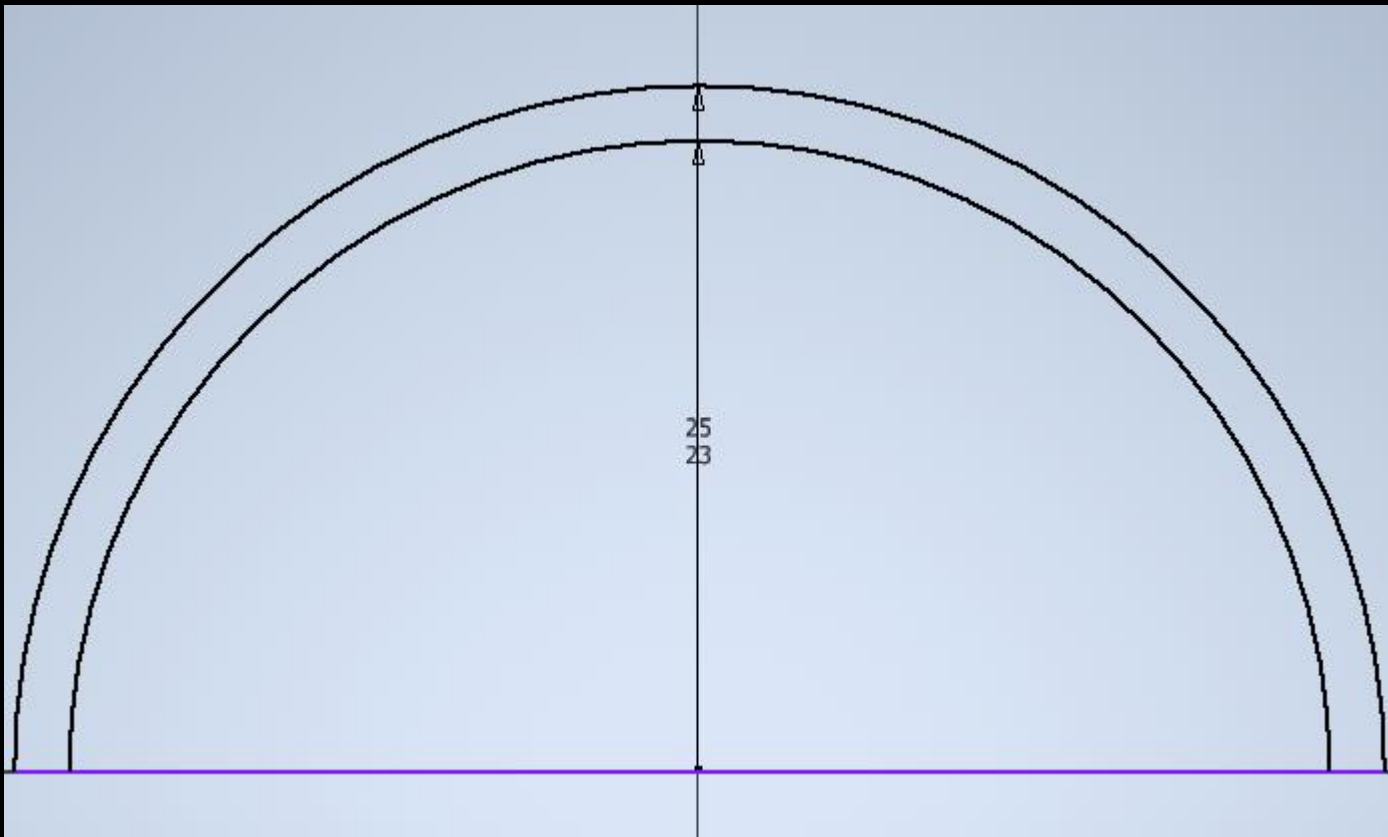
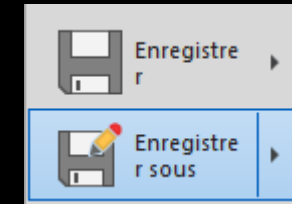
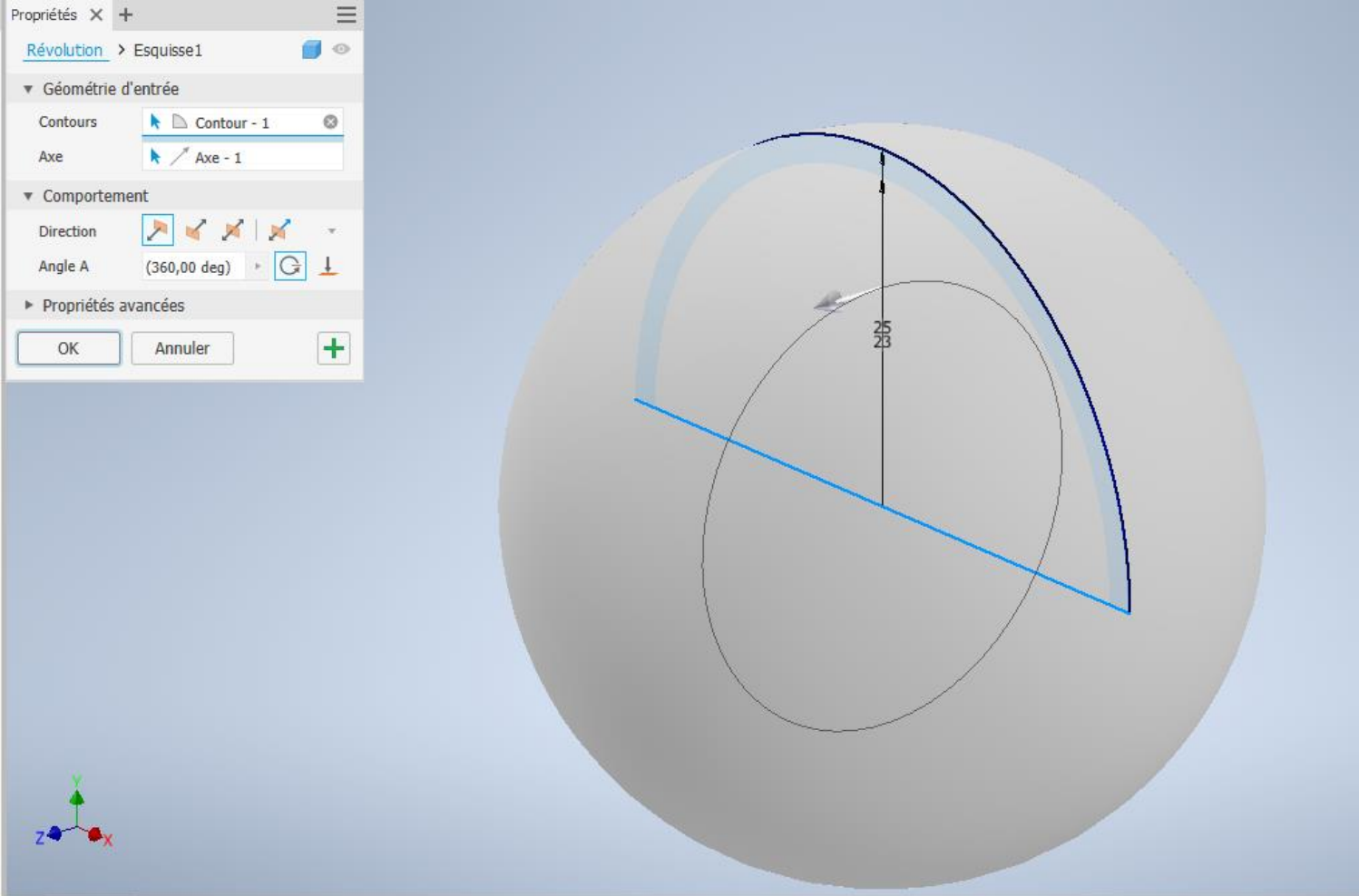


create an arc of 25 cm and another of 23

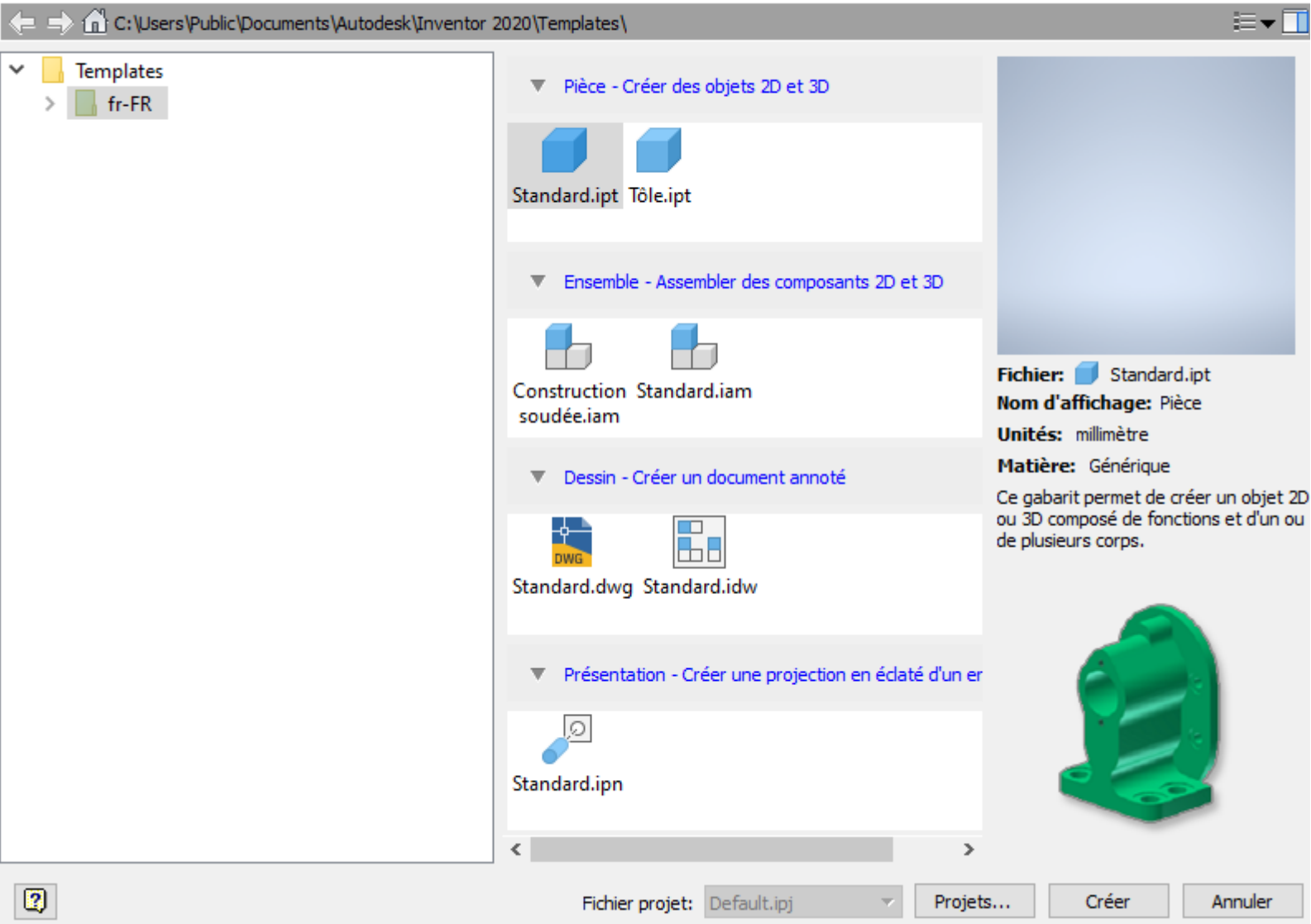




- draw a line to close your arc and close the sketch



- make a revolution of the arc of a circle by taking the axis where you closed your part and save

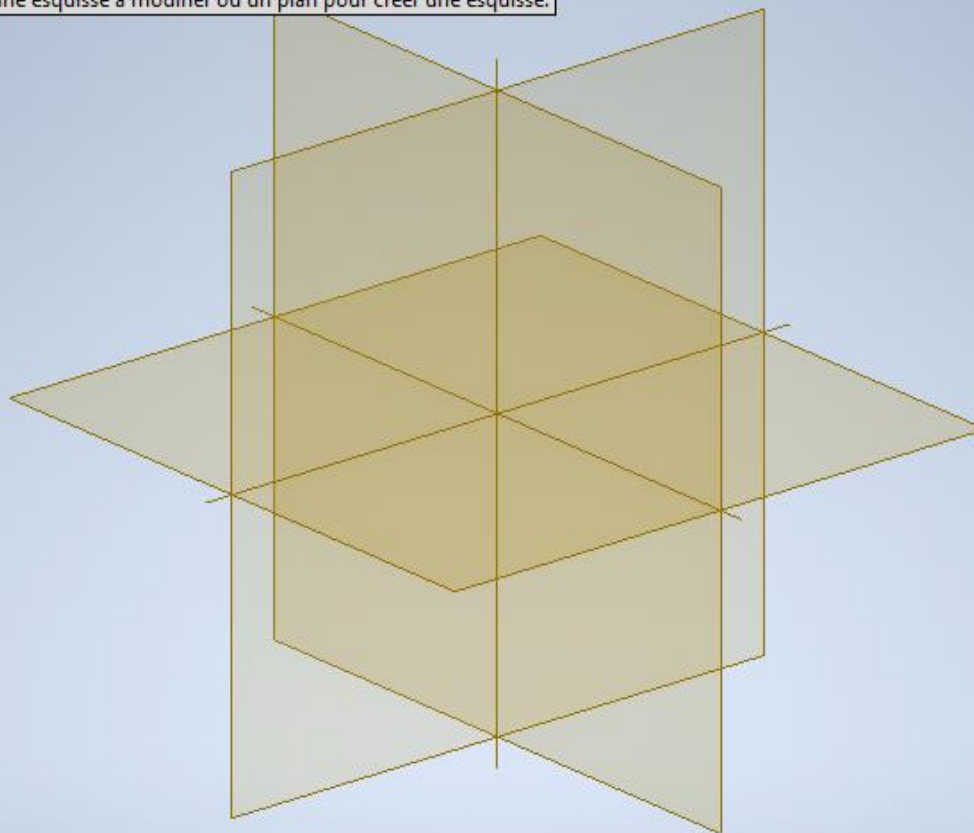


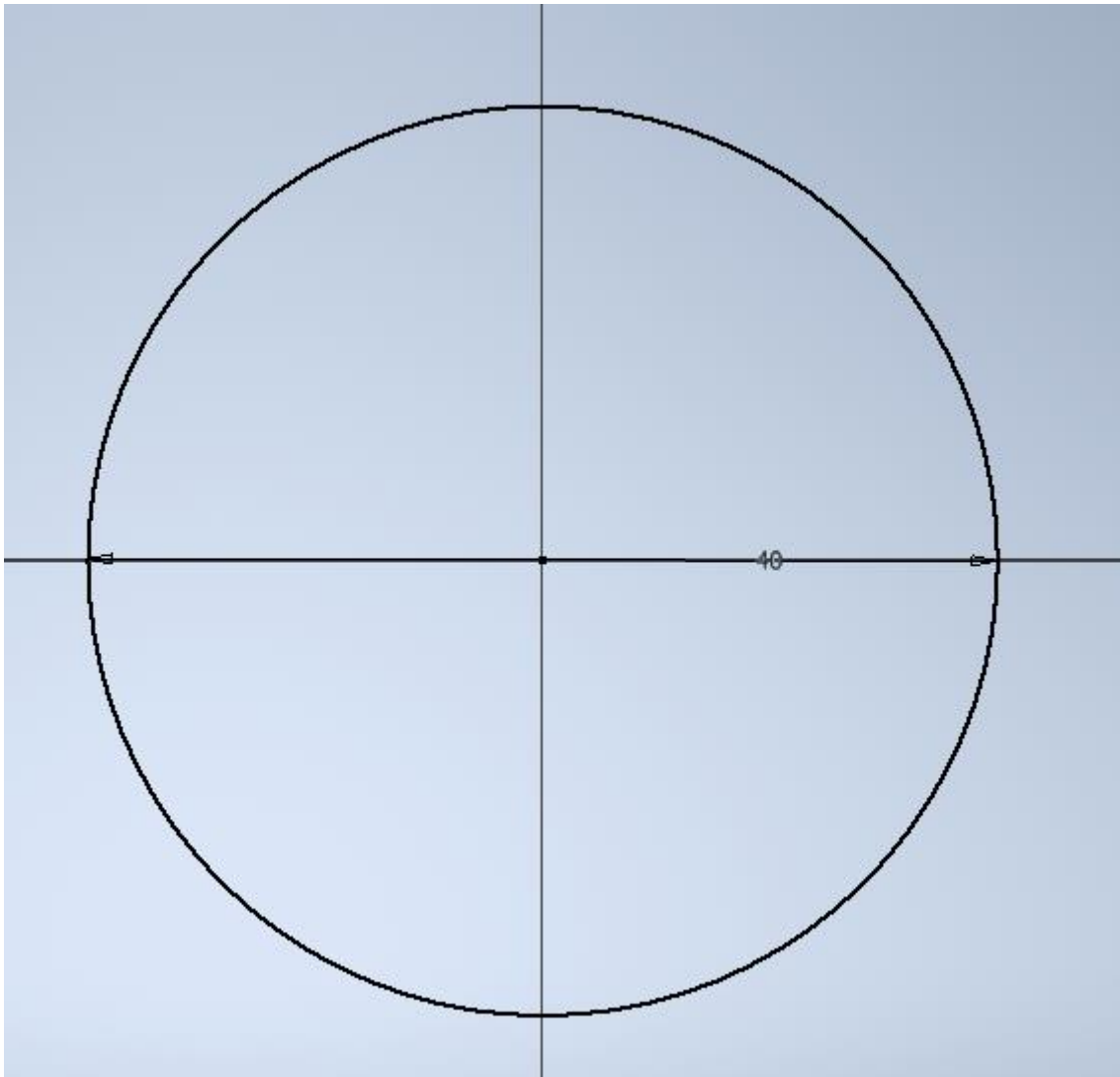


Mo... X + Q

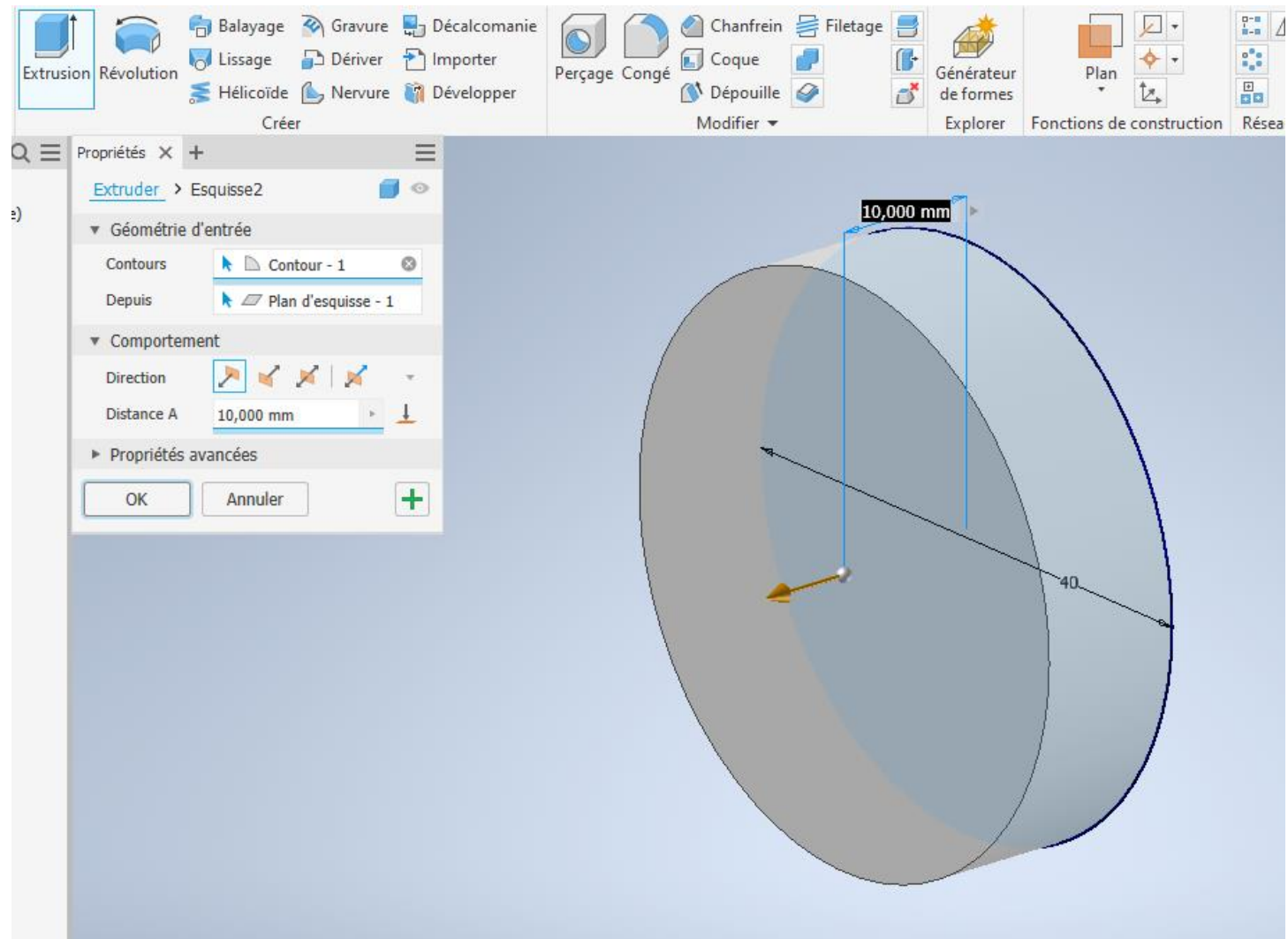
- Pièce2
- + Vue: Principal(e)
- + Origine
- Fin de la pièce

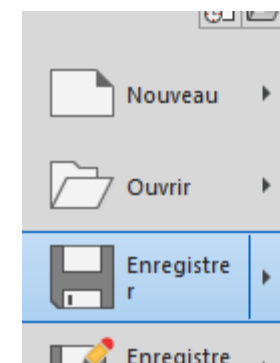
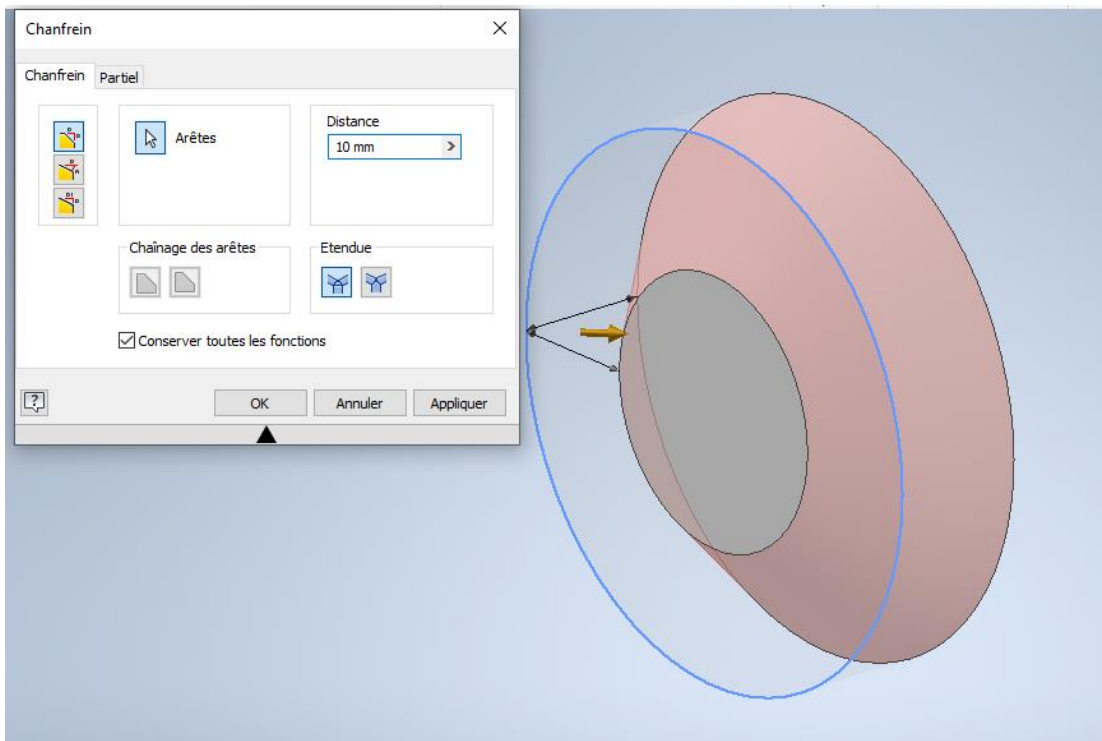
Sélectionnez une esquisse à modifier ou un plan pour créer une esquisse.





draw a circle of 40 cm and
finish sketch





Enregistrer



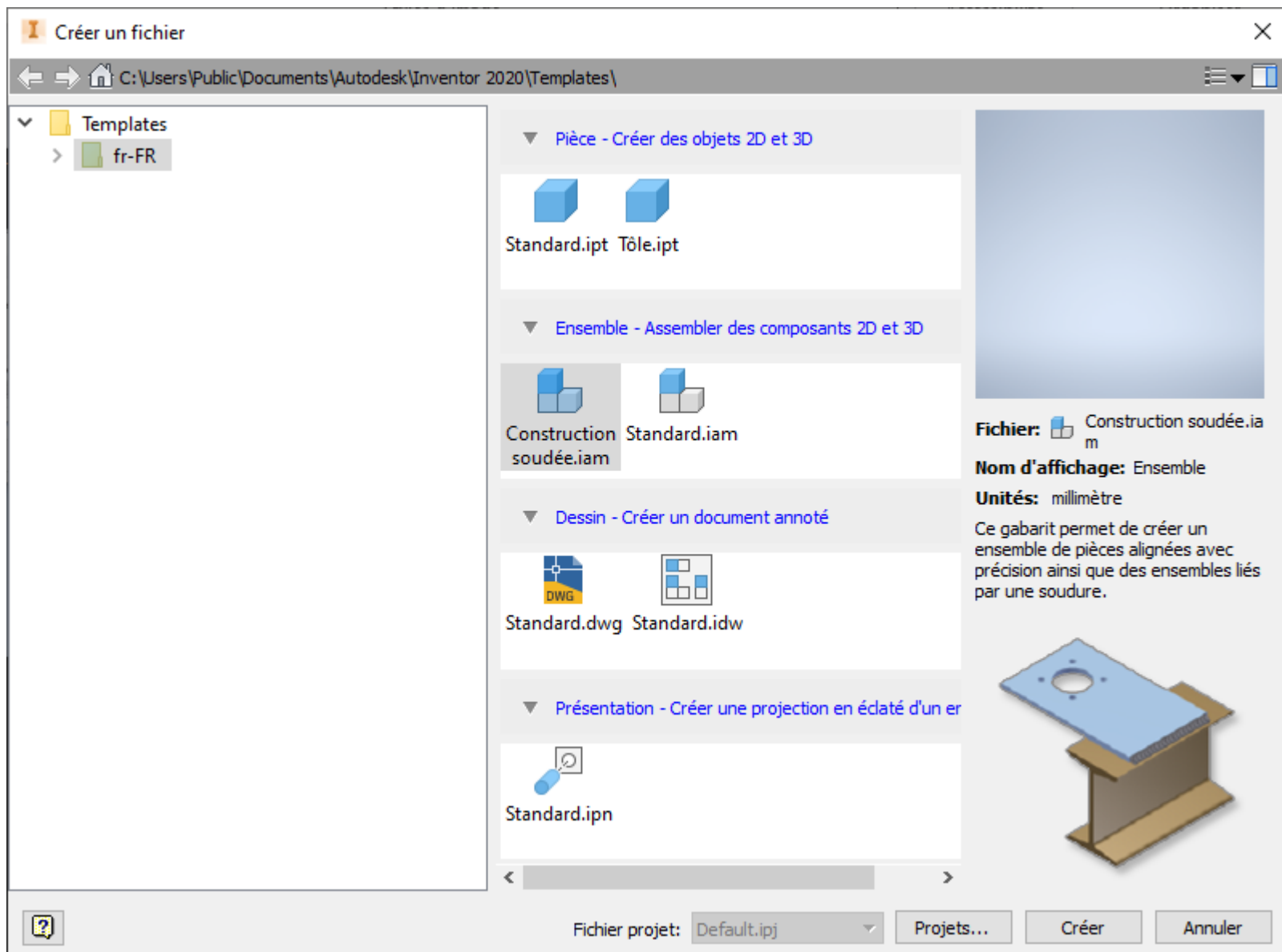
Enregistrer

Enregistrez le fichier actif.



Enregistrer tout

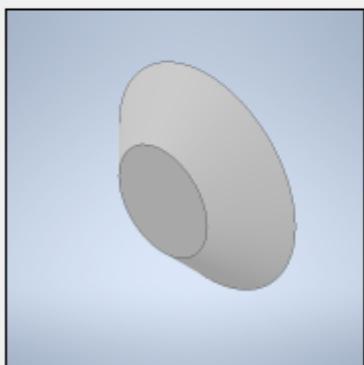
Enregistrez tous les fichiers ouverts.



Placer un composant



Bibliothèques
Content Center Files



Regarder dans :

Téléchargements



Nom	Modifié le	Type
Aujourd'hui (2)		
Pièce2 ETLV.ipt	10/10/2022 00:56	Autodesk
OldVersions	10/10/2022 00:56	Dossier de
Hier (1)		
Pièce1 etlv.ipt	09/10/2022 23:33	Autodesk
Le mois dernier (6)		

Nom du fichier :

Pièce2 ETLV.ipt

Types de fichiers :

Fichiers composant (*.ipt; *.iam)

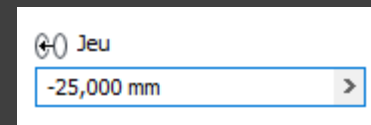
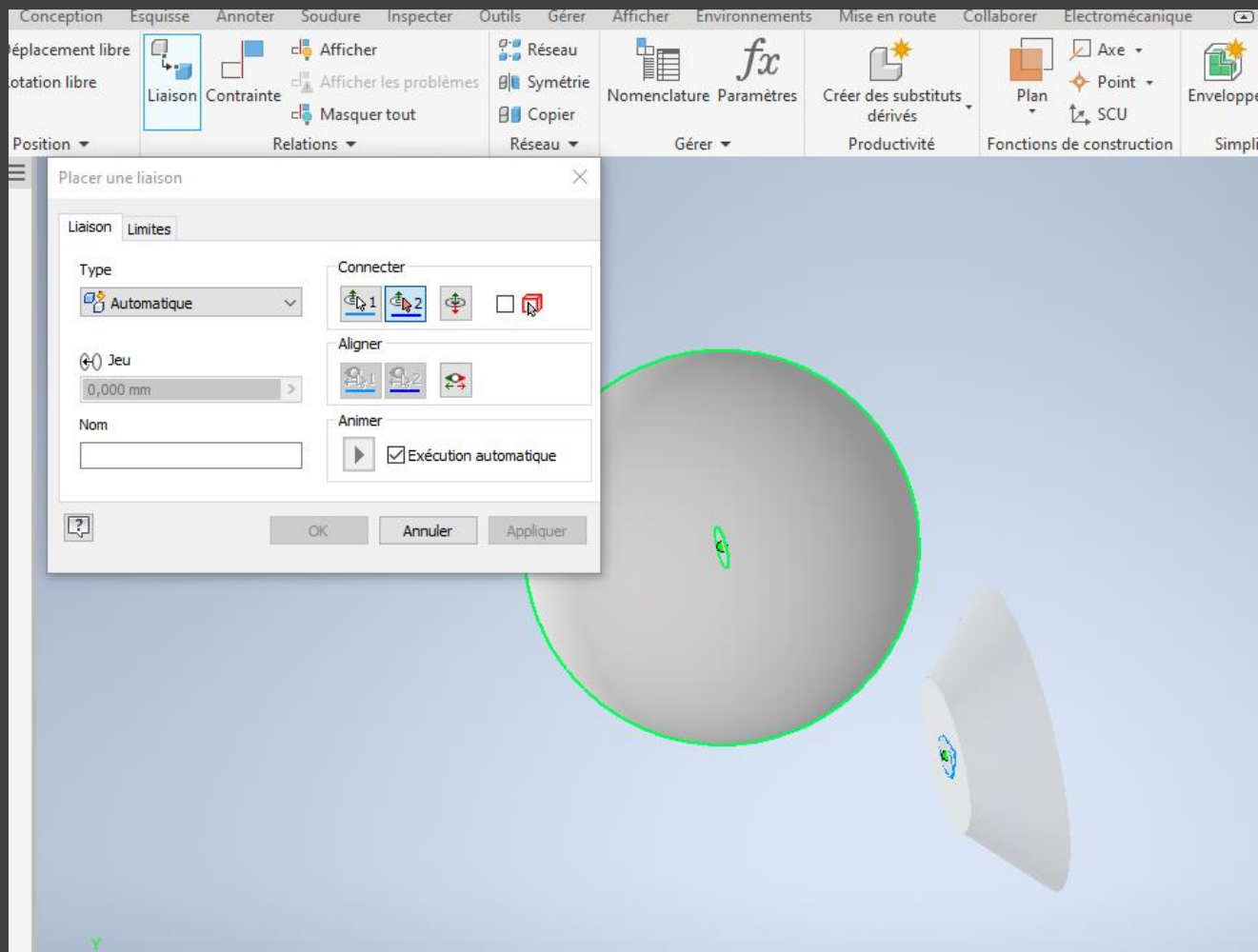
Fichier projet:

Default.ipj

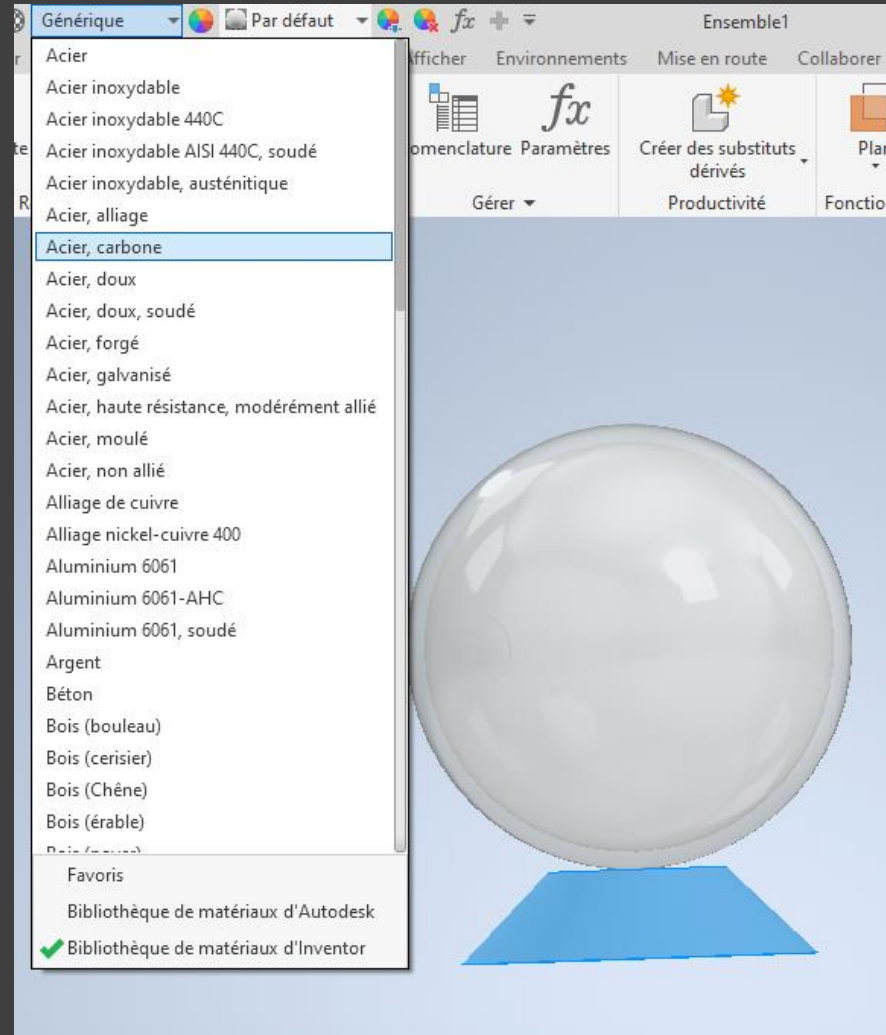
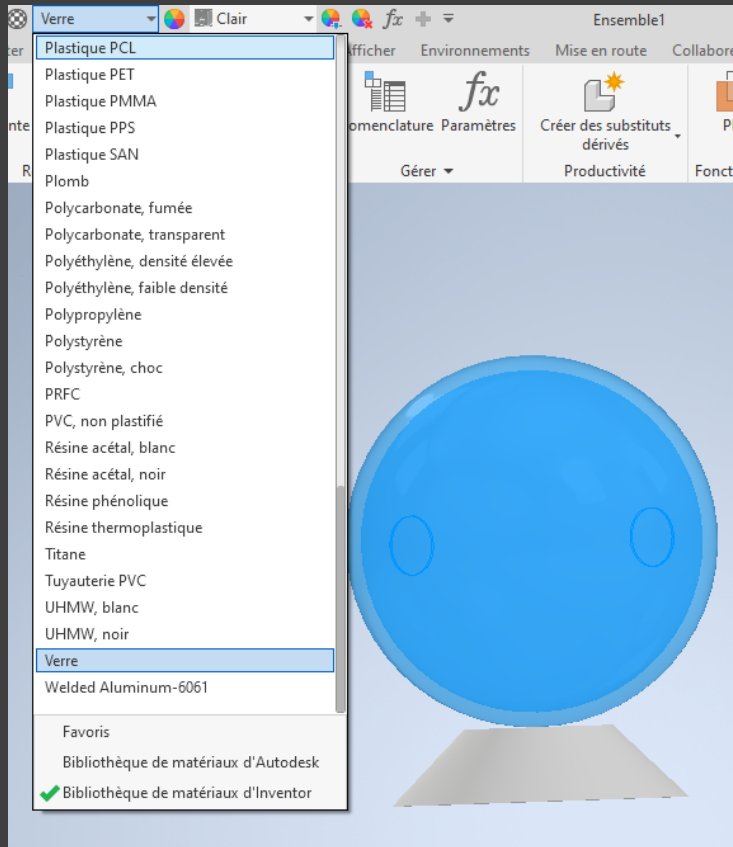
Projets...

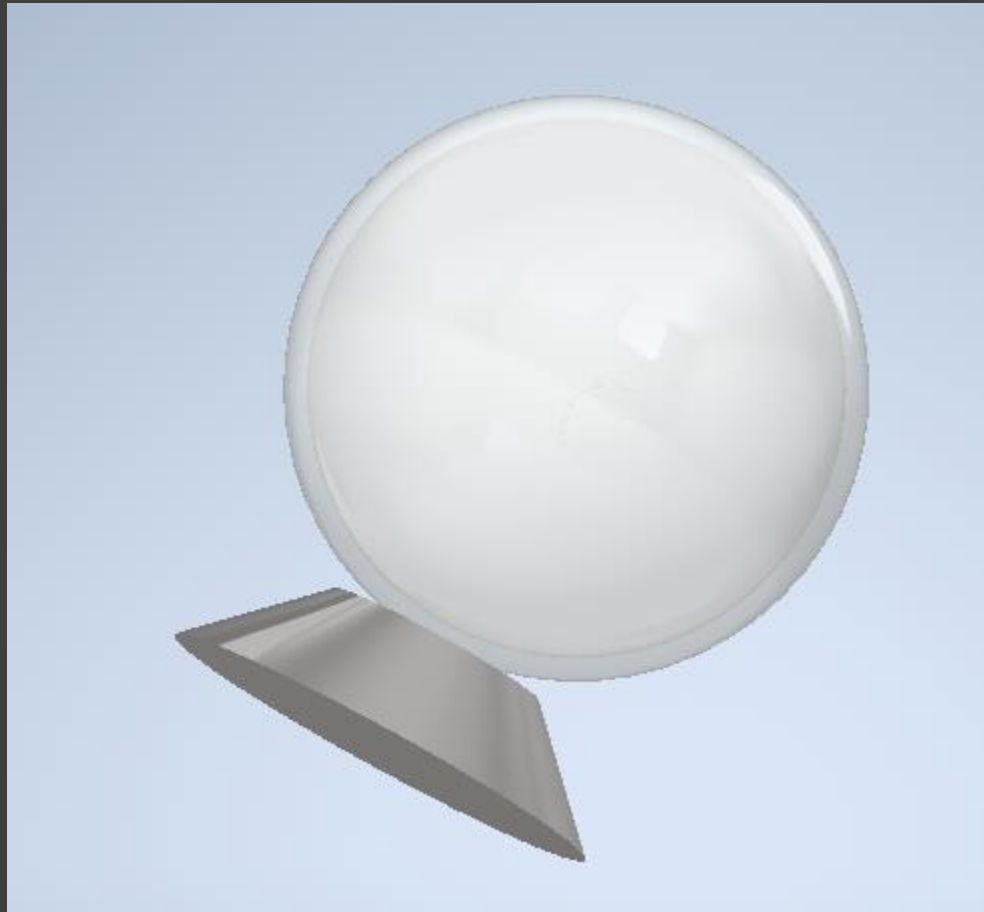
Dernier enregistrement: Autodesk Inventor 2020 (24.0.16891.0000)

make a connection of
your parts with a
clearance of -25 mm



choose a material





You finish you snow
ball